



Medicaid for Employed People with Disabilities: 2010 Member Profile and Evaluation

Iowa Department of Human Services
Division of Results Based Accountability

August 9, 2010



Medicaid for Employed People with
Disabilities:
2010 Member Profile and Evaluation

Iowa Department of Human Services
Bureau of Planning and Research

August 9, 2010

Medicaid for Employed People with Disabilities: 2010 Member Profile and Program Evaluation

Iowa Department of Human Services
Bureau of Planning and Research

Kevin Kasper, Primary Author, Graduate Research Assistant, Iowa State University Department of Statistics
Corey Kientoff, Primary Author, Graduate Research Assistant, Iowa State University Department of Statistics
David Osthus, Primary Author, Graduate Research Assistant, Iowa State University Department of Statistics
Matthew Haubrich, Bureau Chief, Bureau of Planning and Research, Iowa Department of Human Services

Acknowledgments:

MEPD Advisory Committee

Tamara J. Amsbaugh, Policy Analyst, Employment Policy Group,
Center for Disabilities and Development, University of Iowa

Jill Whitten, Medicaid Policy Specialist, Division of Financial, Health
and Work Supports

Dr. Kenneth J. Koehler, Chair, Iowa State University Department of
Statistics

*Made possible with funding from the CMS/Iowa Medicaid Infrastructure
Grant #1QACMS030233*

Executive Summary

Medicaid for Employed People with Disabilities (MEPD) is administered by the Iowa Department of Human Services (DHS) to provide health insurance coverage to qualified Medicaid members while working. The program seeks to provide incentives for disabled people to begin to work or to increase their hours of work and also to increase the earned income of enrollees. The MEPD program has an advisory committee made up of consumers and policy makers who provide input and advice on refining the program to achieve these goals.

In the spring of 2010, work began on a sixth annual member evaluation of MEPD funded by a federal Medicaid Infrastructure Grant. With input from the MEPD Advisory Committee and other policy makers, the DHS Bureau of Planning and Research designed a scientific survey of MEPD members to gauge their satisfaction with various components of the program as well as their demographic factors and their overall attitudes toward work. The survey was designed to provide data that suggest how the MEPD program can be improved as well as to provide a better understanding of the demographics and attitudes of MEPD members. A telephone survey was administered in March of 2010 with a sample of 519 MEPD members.

The main focus of the 2010 MEPD Member Profile and Program Evaluation is to provide as much relevant information about the most recent survey results as possible, as well as to compare those results with the results of the 2009 member survey and to point out possible multi-year trends.

Membership has increased from 12,734 in May 2009 to 13,571 in March 2010, a 6.6% increase. The average earned income for MEPD members is \$158.70 per month, a decrease of 1.4% from 2009; and average unearned income is \$986.08, an increase of 6.0% from 2009. The percent of members paying a premium is basically unchanged (23.9% in 2010, 23.8% in 2009). For members paying a premium, the average amount paid per month is \$38.19, down from \$46.42 last year and \$48.62 in 2008. Around half of the 2010 survey respondents (46.1%) rent a home or apartment, and an additional 35.9% own their own home or apartment.

The most common primary disabilities respondents reported having could be characterized as mental health, health, and physical problems, respectively. Bipolar disorder, depression, and schizophrenia were the most common specific conditions listed. About 73.2% of respondents also indicated they have secondary disabilities. These were most frequently reported to be additional health, mental, and physical problems, the most common specific secondary disability being diabetes.

Survey respondents have an employment rate of 83.8% (self-reported), which is near the employment rates of 83.4% in 2009 and 82.7% in 2008. A majority work for an employer, mainly in jobs involving childcare and janitorial tasks. Similar to previous years, among those who are working, the vast majority work less than ten hours per week. More than one third of respondents want to increase their work hours, largely because they feel useful when working, they feel good about working, and they like earning money.

Among those who do not wish to increase their hours, the top reasons for not wanting to do so are physical inability, non-work-related decline in health, and the feeling that working is stressful. A majority report that it is difficult to find a job in their community, and over 40% say that community attitudes towards people with disabilities poses a problem when it comes to finding or keeping a job. Nearly half of respondents (49.3%) reported that they had been worried or very worried about losing Medicaid prior to enrollment in MEPD, while only 20.2% reported being worried or very worried after enrollment. More than one third (35.2%) indicated they would go without medical care if they did not have MEPD.

Survey respondents most frequently reported that they liked the MEPD program because it is affordable, financially helpful, and has good coverage and benefits. The most common dislikes of the program include paperwork issues and that members do not fully understand the program.

Survey results show that members remain quite happy with MEPD – 84.8% say they are happy or very happy with the program, and 95.7% would recommend the MEPD program to other people with disabilities.

Contents

1	Background and Methodology	1
1.1	Background and Purpose of Study	3
1.2	Methodology	5
2	Member Characteristics	9
2.1	Location	12
2.2	Premiums	13
2.3	Income	14
2.4	Demographics	16
2.5	General Health	23
2.6	Disability Identification	24
3	Work Experiences and Attitudes	27
3.1	Work Status	29
3.2	Work History	32
3.3	Attitudes	35
3.4	Problems in Finding or Keeping a Job	42
3.5	Work and Medicaid	44
4	Member Satisfaction with MEPD	51
4.1	Overall Member Happiness with MEPD	53
4.2	Likelihood to Recommend	54
4.3	Positive Comments	55
5	Member Problems and Suggestions	57
5.1	Types of Problems with MEPD	59
5.2	Dislikes	60
6	Intake and Enrollment	63
6.1	How Members First Learned of MEPD	65

6.2	Satisfaction with Applying for MEPD	66
6.3	Comments on Enrollment	70
A	Survey Instrument	73
B	Responses to Survey Questions	89
C	Pre-Notice Letter	119
D	Responses to Open-Ended Questions	123

List of Figures

1.1	MEPD Membership by Month	4
1.2	Letter Familiarity, by Year	8
2.1	MEPD Membership, by County	12
2.2	Premium Payment Distributions from 2008 to 2010	13
2.3	Average Monthly Income of MEPD Members, by Year	14
2.4	Age of MEPD Members, by Year	16
2.5	Age Distribution of MEPD Members and Survey Respondents, 2010	17
2.6	Gender of MEPD Members and Survey Respondents, by Year	18
2.7	Race/Ethnicity of MEPD Members, 2010	19
2.8	Education Level of MEPD Members, 2010	20
2.9	Living Arrangement of Survey Respondents, by Year	21
2.10	Respondents' Self-Reported Health, by Year	23
2.11	Respondents' Primary Disabilities Identification, 2010	25
2.12	Respondents' Secondary Disabilities Identification, 2010	26
3.1	Work Intensity, by Year	30
3.2	Job Type, 2010	31
3.3	Current Total Earnings Compared to Previous Earnings, by Year	32
3.4	Current Hourly Earnings Compared to Previous Earnings, by Year	33
3.5	Current Hours Worked Compared to Previous Hours, by Year	34
3.6	Attitudes Concerning Current Work Amount, by Year (Employed Respondents)	35
3.7	"If I could, I would work more": Agreement Level, by Year	36

3.8	“I just want to work the minimum amount to keep my medical assistance”: Agreement Level, by Year	37
3.9	Reasons for Wanting to Work More, by Year	39
3.10	Reasons for Not Wanting to Work More, by Year	41
3.11	Problems in Finding or Keeping a Job, 2010	42
3.12	“The MEPD program lets me work and stay on Medicaid”: Agreement Level, by Year	44
3.13	“The MEPD program lets me have more money saved than other Medicaid programs”: Agreement Level, by Year	45
3.14	Concern regarding Medicaid Eligibility: Before and After Enrollment, by Year	46
3.15	Alternatives to MEPD Comparison, by Year	48
3.16	Marital Status and Employment of Respondents’ Spouses, by Year	49
4.1	Overall Happiness with the MEPD Program, by Year	53
4.2	“I would recommend the MEPD program to people with a disability”: Agreement Level, by Year	54
4.3	Respondents’ Likes About MEPD, 2010	55
5.1	Types of Problems with the MEPD Program, 2010	59
5.2	Respondents’ Dislikes About MEPD, 2010	60
6.1	How Respondents First Learned About MEPD	65
6.2	“I’m satisfied with how I applied for the MEPD program”: Agreement Level, by Year	66
6.3	Satisfaction with Elements of Application Process, by Year	68
6.4	Satisfaction with Elements of Application Process, 2010	69

List of Tables

B.1	(Question 1) Have you heard of MEPD, sometimes called Medicaid for Employed People with Disabilities, “mep-ED’, or the Medicaid Buy-in?	91
B.2	(Question 2) How did you learn about MEPD?	91
B.3	(Question 3a) “Applying for MEPD was easy.”	92
B.4	(Question 3b) “The rules for getting MEPD were explained clearly to me.”	92
B.5	(Question 3c) “The DHS worker was helpful.”	92
B.6	(Question 3d) “I understand how much money I can save and stay on MEPD.”	93
B.7	(Question 3e) “I understand how much money I can earn and stay on MEPD.”	93
B.8	(Question 3f) “Applying for MEPD was quick.”	93
B.9	(Question 3g) “I’m satisfied with how I applied for the MEPD program.”	94
B.10	(Question 4) Do you have anything else to say about applying for the MEPD program?	94
B.11	(Question 5a) “The MEPD program lets me work and stay on Medicaid.”	94
B.12	(Question 5b) “The MEPD program lets me have more money saved than other Medicaid programs.”	95
B.13	(Question 5c) “If I could, I would work more.”	95
B.14	(Question 5d) “I just want to work the minimum amount to keep my Medicaid.”	95
B.15	(Question 5e) “I would recommend the MEPD program to people with disabilities.”	96
B.16	(Question 6) Before you enrolled in MEPD, were you worried that you could lose your Medicaid if you worked or got a job?	96

B.17 (Question 7a) Now that you have MEPD for medical assistance, how worried are you that you might lose your Medicaid because you work?	96
B.18 (Question 7b) Now that you have MEPD, how worried are you that you could lose your monthly Social Security because you work?	97
B.19 (Question 8) Have you had any problems with the MEPD program?	97
B.20 (Question 9) What sorts of problems have you had?	97
B.21 (Question 10a) How happy are you with the MEPD program?	98
B.22 (Question 10b) How would you get medical care if you didn't have this program?	98
B.23 (Question 11) Do you currently do any work for pay? . . .	98
B.24 (Question 12b) "I will give you choices about the number of hours you work. Please let me know when I say the number of hours that you work each week."	99
B.25 (Question 13a) Do you want to increase, decrease, or keep the same number of hours you work now?	99
B.26 (Question 13b) Do you want to be working over the next twelve months?	99
B.27 (Question 14a-a) "I want to work more because I like my job."	100
B.28 (Question 14a-b) "I want to work more so that I can earn more money."	100
B.29 (Question 14a-c) "I feel good about working."	100
B.30 (Question 14a-d) "I feel useful when I'm working."	101
B.31 (Question 14a-e) "I'm getting work skills that will let me get better jobs."	101
B.32 (Question 14a-f) "I am building up my ability to work longer hours."	101
B.33 (Question 14a-g) "I get more benefits, like insurance or retirement, when I work more."	102
B.34 (Question 14a-h) Any other reason?	102
B.35 (Question 14b-a) "I would like having a job."	102
B.36 (Question 14b-b) "I want to work so that I can earn money."	102
B.37 (Question 14b-c) "I would feel good about working."	103
B.38 (Question 14b-d) "I would feel useful when working." . . .	103
B.39 (Question 14b-e) "I would get work skills that would let me get better jobs."	103

B.40 (Question 14b-f) “I would be able to build up my ability to work longer hours.”	104
B.41 (Question 14b-g) “I would get more benefits, like insurance or retirement if I worked.”	104
B.42 (Question 14b-h) Any other reason?	104
B.43 (Question 15a-a) “I am worried about losing Medicaid.”	104
B.44 (Question 15a-b) “I am worried about losing my Social Security or SSDI monthly check.”	105
B.45 (Question 15a-c) “I am worried about losing food assistance.”	105
B.46 (Question 15a-d) “I am worried about losing other help like rent subsidy or utility help.”	105
B.47 (Question 15a-e) “Working is stressful.”	106
B.48 (Question 15a-f) “I don’t like my job.”	106
B.49 (Question 15a-g) “My health has gotten worse for reasons not caused by working.”	106
B.50 (Question 15a-h) “Not physically able to work more”	107
B.51 (Question 15a-i) “I need more education or training”	107
B.52 (Question 15a-j) “Working has caused my health to get worse.”	107
B.53 (Question 15a-k) Any other reason?	107
B.54 (Question 15b-a) “I am worried about losing Medicaid.”	108
B.55 (Question 15b-b) “I am worried about losing my Social Security or SSDI monthly check.”	108
B.56 (Question 15b-c) “I am worried about losing food assistance.”	108
B.57 (Question 15b-d) “I am worried about losing other help like rent subsidy or utility help.”	109
B.58 (Question 15b-e) “Working is stressful.”	109
B.59 (Question 15b-f) “I didn’t like jobs I have had before.”	109
B.60 (Question 15b-g) “My health has gotten worse for reasons not caused by working.”	110
B.61 (Question 15b-h) “Not physically able to work”	110
B.62 (Question 15b-i) “I need more education or training”	110
B.63 (Question 15b-j) “Working would cause my health to get worse.”	111
B.64 (Question 15b-k) Any other reason?	111
B.65 (Question 16) Were you working for pay 12 months ago?	111
B.66 (Question 17) Do you earn more, less, or about the same as you did 12 months ago?	111
B.67 (Question 18) Is your hourly pay more, less, or about the same as it was 12 months ago?	112

B.68 (Question 19) Is the number of hours per week that you work more, less, or about the same as it was 12 months ago?	112
B.69 (Question 20a) “Your education”	112
B.70 (Question 20b) “Transportation to and from work”	112
B.71 (Question 20c) “Finding a job in your community”	113
B.72 (Question 20d) “Discrimination by employers”	113
B.73 (Question 20e) “Community attitudes towards disabilities”	113
B.74 (Question 20f) “Finding childcare that doesn’t cost too much”	113
B.75 (Question 20g) “Need for personal assistance on the job”	114
B.76 (Question 20h) “Need for special equipment or assistive technology”	114
B.77 (Question 20i) Is there anything else that’s a problem when finding or keeping a job?	114
B.78 (Question 21) Would you say that your health is...	114
B.79 (Question 22) Do you have a disability?	115
B.80 (Question 24) In addition to your disability, do you have any other medical problems, impairments or disabilities?	115
B.81 (Question 26) Do you currently...	115
B.82 (Question 27) Are you currently married?	115
B.83 (Question 28) Does your spouse work in a job for pay?	116
B.84 (Question 29) Are you worried that your spouse’s earnings may make you lose your Medicaid benefits?	116
B.85 (Question 30b) Do you work for yourself or an employer?	116
B.86 (Question 30e) Would that be working for yourself, or an employer?	116
B.87 (Question 31a) Do you have anything that you like about the MEPD program?	117
B.88 (Question 31b) Do you have anything you dislike about the MEPD program?	117
B.89 (Question 32a) Would you like to get a copy of the report summary?	117

Section 1

Background and Methodology

1.1 Background and Purpose of Study

The Iowa Department of Human Services (DHS) operates, among other programs, Medicaid for Employed People with Disabilities (MEPD). This program allows people with disabilities to maintain a job and still have access to Medicaid assistance. In the spring of 2004, the Iowa DHS identified the need for an annual evaluation of MEPD. After receiving a Federal grant to make this possible, a survey was designed by the **DHS Bureau of Research and Statistics** (now the DHS Bureau of Planning and Research), with help from the **Iowa Medicaid Enterprise Division**, the **Division of Financial, Health, and Work Supports** (now the Division of Adult, Children, and Family Services), and the **MEPD Advisory Committee**.

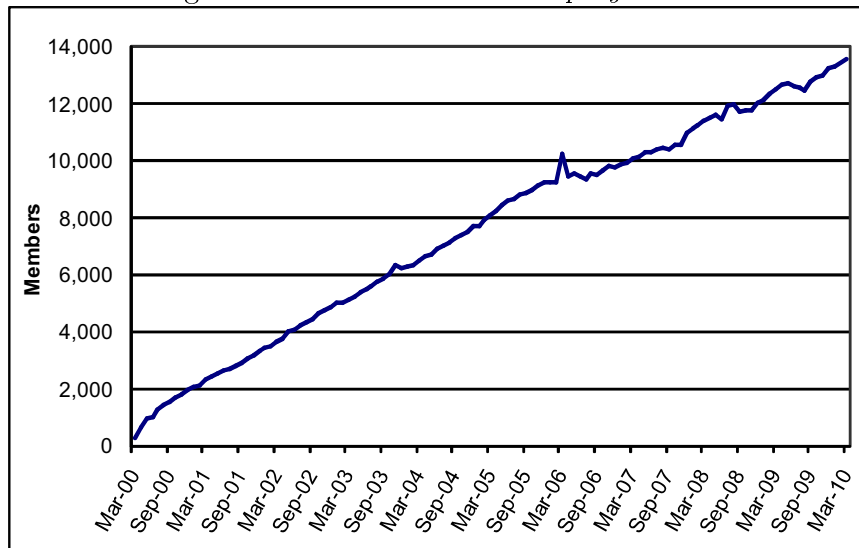
The first five MEPD member surveys were conducted in 2004, 2005, 2007, 2008, and 2009. The sixth survey was conducted in March of 2010. For each survey, telephone interviews were conducted by the University of Northern Iowa Center for Social and Behavioral Research, and the DHS Bureau of Planning and Research analyzed the data. The MEPD member survey has five main goals:

1. To profile the health and demographic factors of MEPD members.
2. To evaluate the program's accessibility and usability for members.
3. To identify areas in which the program could be improved.
4. To identify member attitudes toward work and profile their experiences with work.
5. To identify relevant trends over time, specifically making comparisons between the 2009 and 2010 survey results, as well as notable multi-year trends.

See Appendix A for the complete survey questionnaire.

There were 13,571 MEPD members as of March 1, 2010, when the survey sample was taken from the membership database. Figure 1.1 illustrates the number of members (at any time during the month) each month from March 2000 through March 2010

Figure 1.1: *MEPD Membership by Month*



1.2 Methodology

1.2.1 Sampling

In March of 2010, program evaluations were collected from a sample of 519 MEPD members using a telephone survey developed especially for the Iowa MEPD program. A simple random sample of 1350 members was originally selected from all MEPD members, but some were unable to be reached by telephone or did not wish to participate in the survey. The sampling procedure and survey questionnaire were designed to collect information from a representative sample of members in the MEPD program.

There was no gender based response bias in 2010. In previous years, it was more likely for females to respond than males. Currently, 50.5% of MEPD members are female, the same percentage of female 2010 survey respondents. As in earlier years, older members were more likely to participate in the survey than younger members.

1.2.2 About this Report

When viewing and analyzing the charts created in this report, a few factors should be taken into account. First, the response options “Don’t Know” and “Refused” (referred to as “item non-response”), as well as questions that were otherwise skipped, are excluded from most charts and calculations. In cases where there is a high percentage of non-response or missing data, it is noted in the text. Second, totals of chart values may not add to 100%, either due to rounding or because responses fit into more than one category.

Most of the results in this report illustrate the differences between the results of the 2009 and 2010 surveys, but important trends are also noted. Similarly, most graphs show results from the 2009 and 2010 surveys, but where important three to six-year trends exist, results are shown from all six surveys (2004, 2005, 2007, 2008, 2009, 2010). Several charts show results from only the 2010 survey because of space limitations; these charts have a pale yellow background. Data labels are shown on charts when there is enough room.

All results refer to the 2010 survey unless otherwise noted. Whenever a year is mentioned, it refers to the results from that year's survey. For example, if the report says, "The number of hours worked per week is virtually the same as it was in 2009," it means that on the question regarding number of work hours, results from the 2010 survey are virtually the same as results from the 2009 survey.

1.2.3 Data Considerations

In order to determine statistical significance for differences in year-to-year results, statistical tests known as t-tests and z-tests were performed. For questions involving a response scale (such as Strongly Agree / Agree / Neutral / Disagree / Strongly Disagree), each possible response was assigned a value. Averages for each question were computed. Responses of "Don't Know" or "Refused" were not used in these calculations. Differences in averages were then tested for significance by t-test for each question between years (if the same question existed in both surveys).

For example, one section of the survey asks employed respondents to what extent they agree with each statement in a series of statements about why they might not want to work more. One such statement is, "I want to work more because I like my job." The response "Strongly Agree" was assigned a value of five, "Agree" a value of four, "Neutral" a value of three, "Disagree" a value of two, and "Strongly Disagree" a value of one. The average agreement was 3.98 for 2010, 3.66 for 2009, and 3.89 for 2008. Using a t-test, there was found to be a statistically significant difference between 2010 and 2009 average agreement, but no difference between 2010 and 2008 at the 0.05 significance level. Moreover, the percentage of respondents who agreed or strongly agreed is also a statistic of interest. In order to compare these values, a two-proportion z-test was performed to determine if the differences in percentages among years were statistically significant.

It should also be noted that not all respondents were asked every question. For example, the first survey question is, "Have you heard of MEPD, sometimes called Medicaid for Employed People with Disabilities, 'mep-ED' or the Medicaid Buy-in?" 13.5% of respondents answered "No" (a decrease from previous years). These respondents were not asked questions about enrollment or program satisfaction, but were asked questions

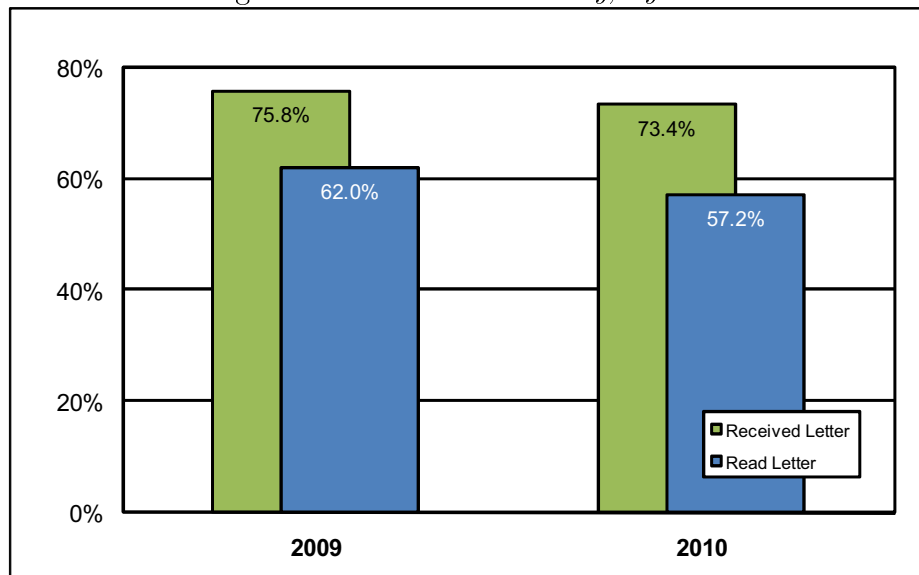
about their work experiences, work attitudes, and lifestyles. Therefore some results presented below (mainly in Member Satisfaction – Section 4 – and Intake and Enrollment – Section 6) apply only to participants stating that they have heard of MEPD.

Appendix B lists, for each question, the percentage breakdown of responses to each question, in addition to the number of respondents who answered the question (not including those who refused or answered “Don’t Know”), the number of respondents who refused to answer the question or answered “Don’t Know”, and the number of respondents who were not asked the question.

1.2.4 Pre-Notice Letter

Approximately two weeks prior to survey participation, each potential respondent was sent a letter briefly describing the survey and indicating that they might be asked to participate in it. Each respondent was also made aware that survey participation was not required, but would be very helpful for improving the MEPD program. Appendix C contains the text of this letter. When called for the survey, approximately 73.4% of all 2010 respondents indicated they received the letter; this is slightly less than 2009 when 75.8% of all potential respondents acknowledged receiving the letter. This is consistent with all previous years, excluding 2008 when 83.0% of respondents acknowledged receiving the letter. In 2010, 57.2% of respondents read the letter, which is 78.0% of those who received it. See Figure 1.2.

Figure 1.2: *Letter Familiarity, by Year*



Section 2

Member Characteristics

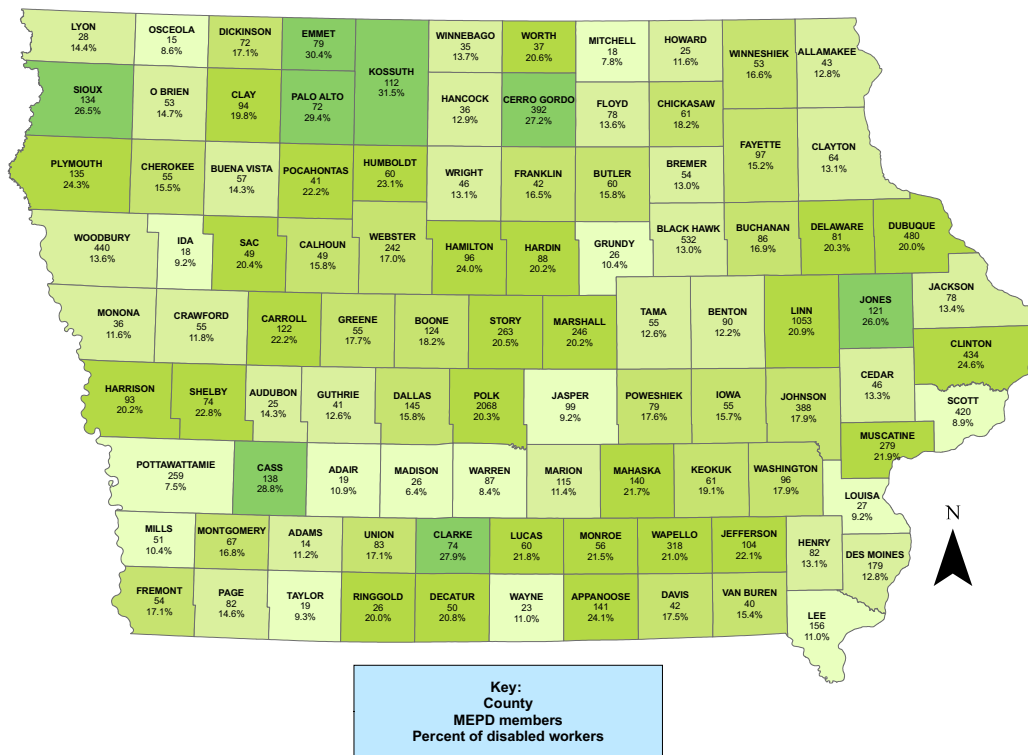
In order to compare the 2010 member base with previous years, as well as to see how well the survey sample represents the overall MEPD member population, the following section outlines key demographics and characteristics of the 2010 survey respondents and MEPD population, as well as some year-to-year comparisons. Some key comparisons are also made with the entire population of Iowa.

Data on MEPD members' premiums, income, age, gender, race/ethnicity, and education come from the member population database. This information was updated during data collection. Data on living arrangement, marital status, children, and health/disabilities were collected from survey respondents only.

2.1 Location

Figure 2.1 shows the geographical spread of MEPD members. For each county, two numbers are shown: the number of MEPD members who live in that county, and that number as a proportion of the county’s estimated number of disabled workers¹. For example, 141 MEPD members live in Appanoose County, equivalent to 24.1% of all disabled workers in that county. The map is color-coded by density – darker colors indicate a larger proportion of disabled residents on MEPD.

Figure 2.1: *MEPD Membership, by County*



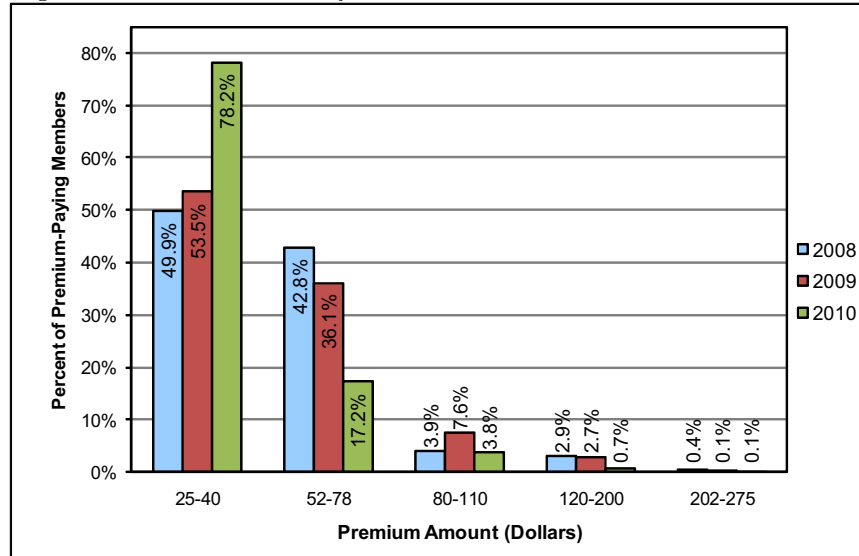
The state average is 16.8 MEPD members per 100 disabled workers.

¹Source: Table 4, http://www.ssa.gov/policy/docs/statcomps/oasdi_sc/2008/ia.pdf

2.2 Premiums

Figure 2.2 shows the distribution of monthly premium amounts paid by the 2010, 2009, and 2008 MEPD populations (not just the survey respondents) at the time of their respective surveys. 23.9% of all members pay some premium, about the same as 2009 (23.8%). Note that the minimum monthly premium amount was \$25 in 2010, which is lower than in 2008 and 2009. Of all members paying a premium, the average monthly payment in 2010 is \$37.81. This is significantly lower than the average premium amount in 2009, of \$48.42. This can be accounted for by the increased proportion of MEPD members paying a lower premium amount. For instance, as shown in Figure 2.2, in 2010, almost 80% of premium payers paid between 25 and 40 dollars.. This is appreciably different from 2009 and 2008, where approximately 50% of premium payers paid between 25 and 40 dollars.. Thus with so many more individuals paying lower premiums in 2010 compared to previous years, we see a decrease in average premium amount.

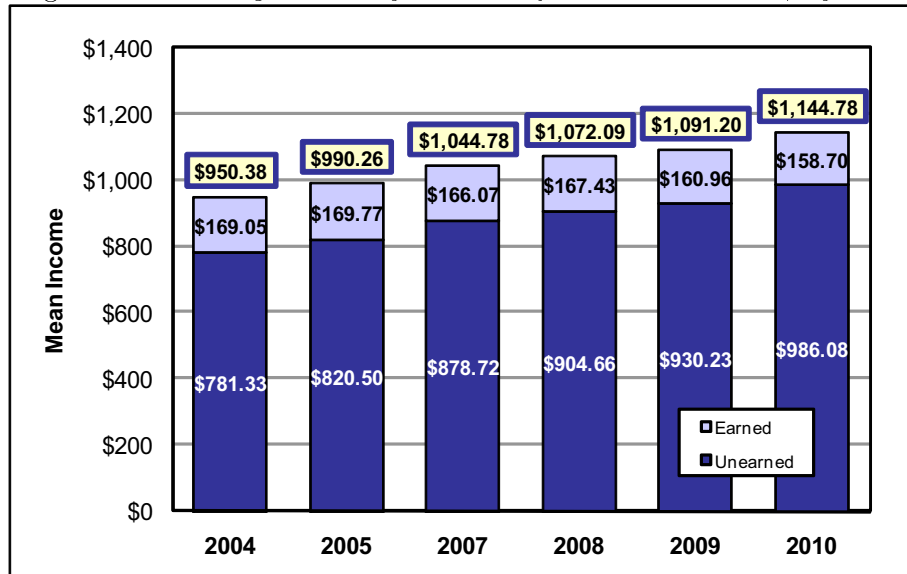
Figure 2.2: Premium Payment Distributions from 2008 to 2010.



2.3 Income

One requirement for MEPD is that a member must have some earned income. This is money received for any employment or self-employment and may include wages, tips, commissions, bonuses, and work-study. The average earned income for all MEPD members is \$158.70 a month, a decrease of 1.4% from 2009 when the average earned income was \$160.96. The average unearned income for all MEPD members is \$986.08 a month, up from \$930.23 in 2009 (a 6.0% increase) and \$904.66 in 2008 (9.0% increase). See Figure 2.3. Unearned income includes any money received that is not earned income and includes Social Security, SSI, veterans' benefits, unemployment benefits, child support, disability benefits, educational grants and loans, and cash gifts. The increase in unearned income may be attributed to cost of living increases for Social Security Disability Insurance and/or other cash benefits.

Figure 2.3: *Average Monthly Income of MEPD Members, by Year*



Another key statistic to evaluating income is the median income, or the amount that half of MEPD members earn more than. The median earned income is \$30.00 per month, the same as 2009. Median unearned income has risen to \$937, up 5.5% from 2009 and 8.4% from 2008.

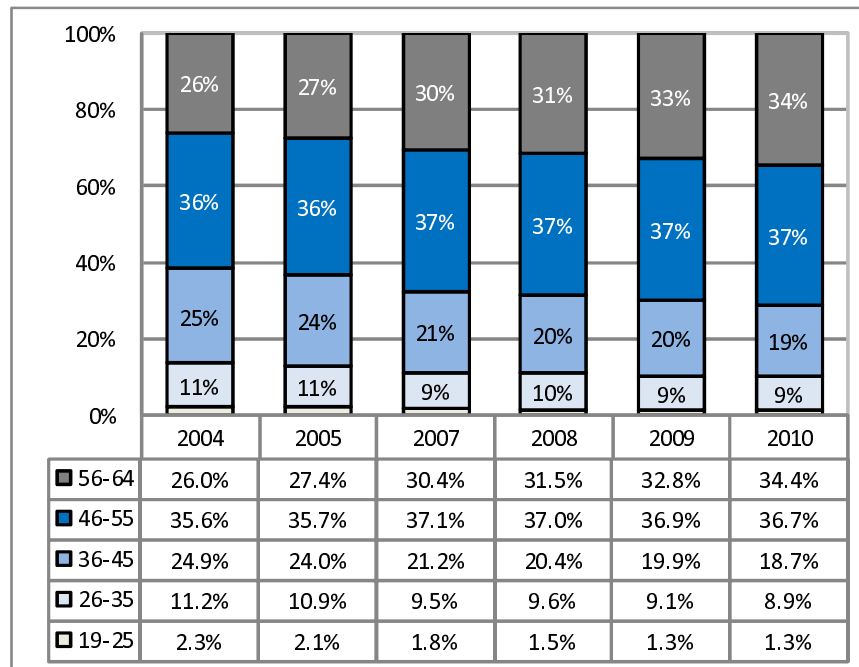
The average earned income for 2010 survey respondents is higher than the MEPD population's by about \$21 (13.4%), and respondents' unearned income is about \$16 (1.6%) higher than that of the MEPD population.

2.4 Demographics

2.4.1 Age

The age distribution of MEPD members has remained fairly constant through the years, although age has increased slightly. As seen in Figure 2.4, 71.1% of present members are at least 46 years old; this percentage has been increasing since 2004 when 61.6% of members were at least 46 years old. The average age of all MEPD members, as of March 1, 2010, is approximately 50.0 years; in 2009, this figure was 49.6 years, in 2008 it was 49.3 years, and in 2007 it was 49.1 years.

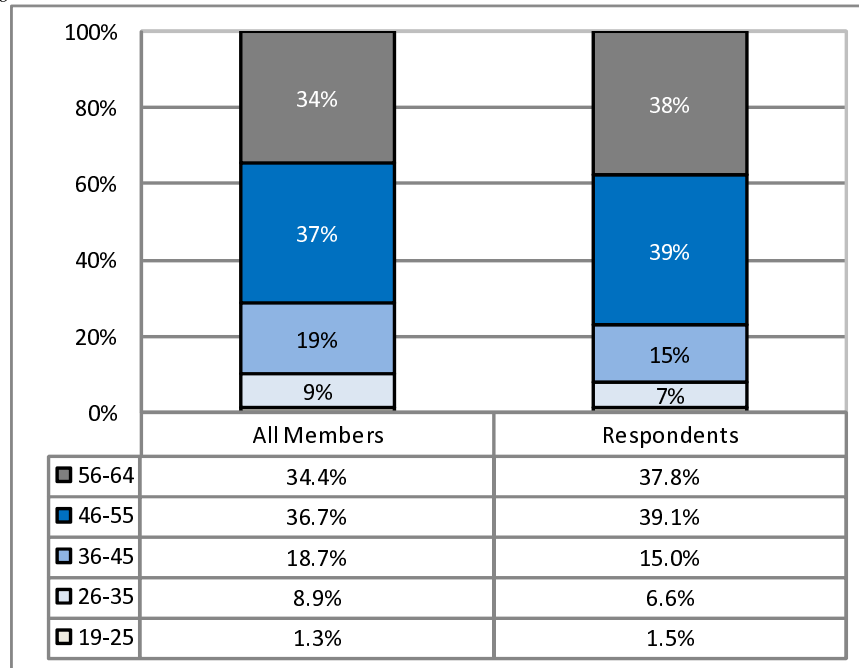
Figure 2.4: *Age of MEPD Members, by Year*



People over the age of 64 are not eligible for MEPD.

Survey respondents tend to be slightly older than the MEPD population on average: 51.0 years old compared to 50.0. While 71.1% of all MEPD members are in the 46-65 age group, 76.9% of survey respondents are in this age group (see Figure 2.5).

Figure 2.5: *Age Distribution of MEPD Members and Survey Respondents, 2010*



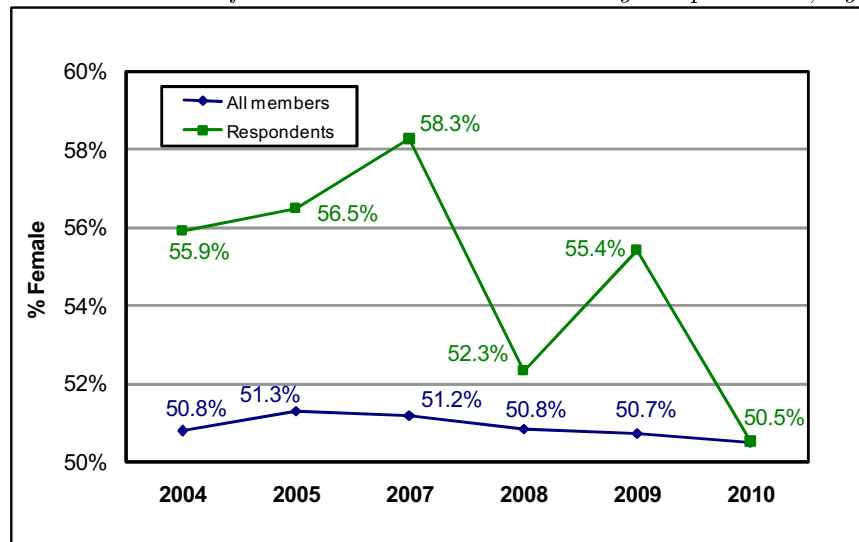
Among all Iowans, the median age is approximately 38.2 years².

²Source: 2008 American Community Survey, 1-Year Estimates.

2.4.2 Gender

The population of all MEPD members (as of March 1, 2010) is 50.5% female, nearly identical to 2009. In previous surveys, females made up a slightly larger proportion of the sample than of the MEPD population. This is not uncommon in surveys conducted by telephone. This trend, however, did not hold in 2010 when 50.5% of respondents were female - the same as the population. See Figure 2.6.

Figure 2.6: *Gender of MEPD Members and Survey Respondents, by Year*



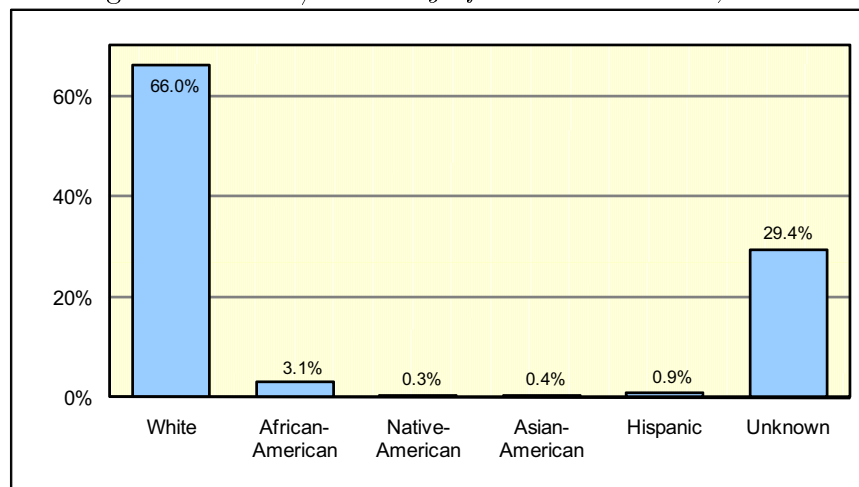
Among all Iowans age 20-64, slightly more than half (50.7%) are female³.

³Source: 2008 American Community Survey, 1-Year Estimates.

2.4.3 Race/Ethnicity

Among those whose ethnicity is known, 94% of MEPD members are White non-Hispanic and just over 4% are African-American. Data are incomplete for more than one-quarter of the members (29.4%) as shown in Figure 2.7. The racial/ethnic makeup of the MEPD population has not changed much since 2004.

Figure 2.7: *Race/Ethnicity of MEPD Members, 2010*



The survey respondents have a very similar racial makeup to that of the MEPD population.

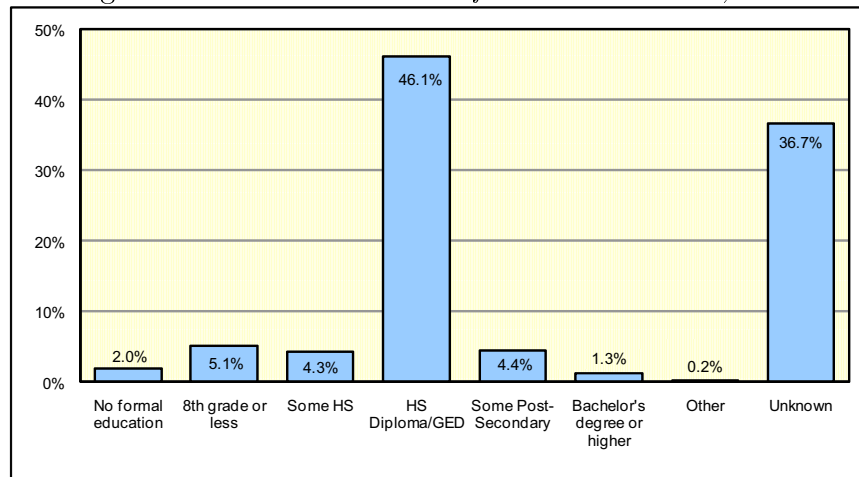
From the 2008 estimates, for the entire state of Iowa, the population is 90.2% White non-Hispanic, 2.5% African-American, 4.1% Hispanic/Latino (any race), 1.5% Asian, 0.2% Native American, less than 0.1% Native Hawaiian/Other Pacific Islander, and 1.5% multiracial⁴.

⁴Source: 2008 American Community Survey, 1-Year Estimates.

2.4.4 Education

Among members whose education is known, slightly more than four-fifths (81.9%) have at least completed high school or obtained a GED. This is virtually the same as it was in 2009. This includes 72.9% whose highest education level is 12th grade or GED, 7.0% with some college, and 2.0% with a college degree. Thus 81.9% of members have at least a high school education or obtained a GED with 9.0% having some education beyond high school, which is just more than 7.9% in 2009. Information is not available for more than one-third of members. This is reflected in Figure 2.8.

Figure 2.8: *Education Level of MEPD Members, 2010*



Education levels for survey respondents are similar to the member population.

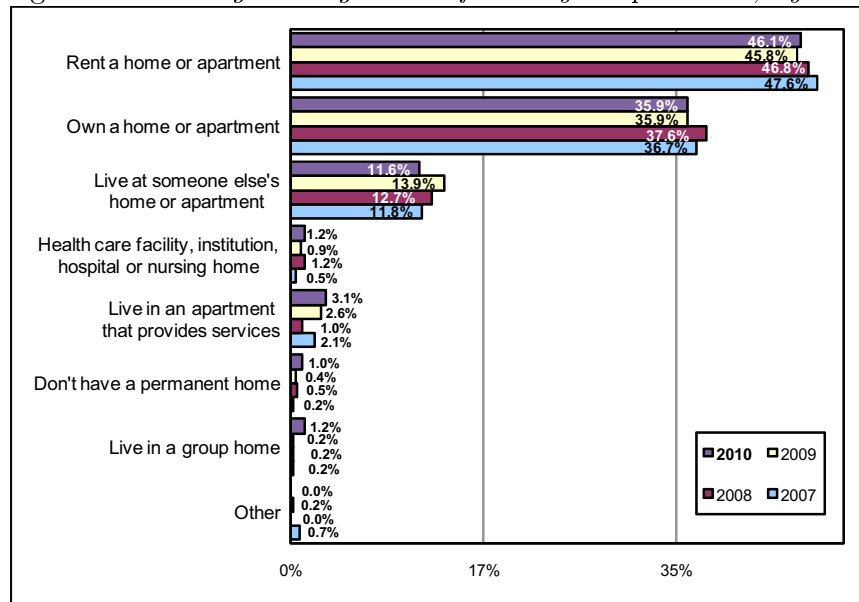
As of 2008, approximately 90.3% of Iowans ages 25 years and over had completed high school or obtained a GED. In addition, 56.5% of Iowans have educational experiences beyond high school, and 24.3% have at least a bachelor's degree⁵.

⁵Source: 2008 American Community Survey, 1-Year Estimates.

2.4.5 Living Arrangement

Figure 2.9 shows the living arrangements of the 2010 survey respondents. Slightly less than half of respondents (46.1%) rent a home or apartment. A little more than a third (35.9%) own their home or apartment. The breakdown is not very different from that of 2009 (45.7% rent, 35.9% own). The proportion of people that live in an apartment that provides services has been increasing since 2008. The percentage in 2010 (3.1%) is significantly greater than the percentage in 2008 (1.0%).

Figure 2.9: *Living Arrangement of Survey Respondents, by Year*



The home ownership rate for all of Iowa in 2008 was 72.9%⁶.

⁶Source: 2008 American Community Survey, 1-Year Estimates.

2.4.6 Marital Status

Respondents were asked their current marital status. 26.4% of respondents are married, a percentage consistent with previous years.

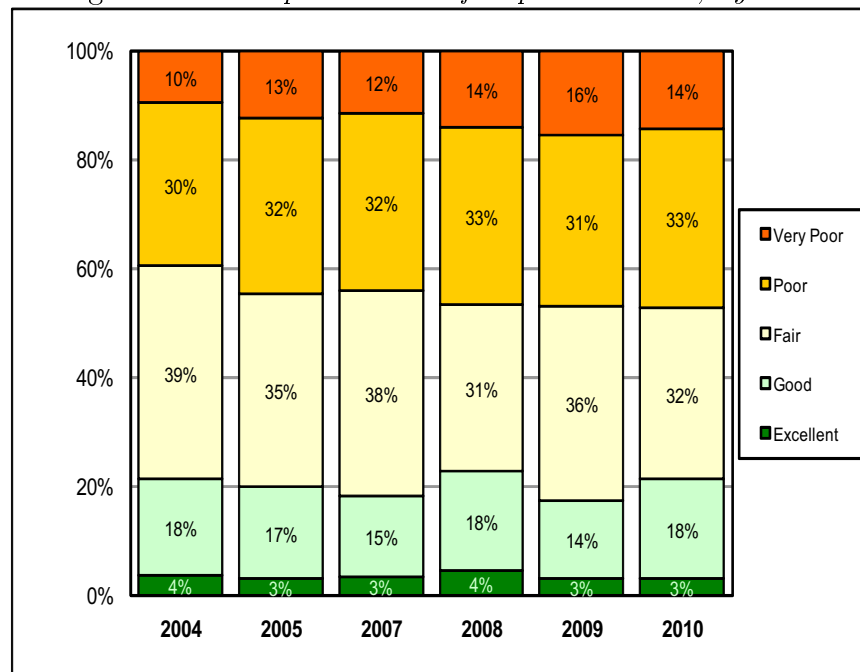
As of 2008, 55.6% of all Iowans age 15 and up were married⁷.

⁷Source: 2008 American Community Survey, 1-Year Estimates.

2.5 General Health

Respondents were asked to rate their general health on a five-point scale, ranging from Excellent to Very Poor. Figure 2.10 shows that self-reported health of MEPD members declined slightly between 2004 and 2008, but has leveled off these past three years. 47% of survey respondents reported their health as Poor or Very Poor - the same percentage as in 2008 and 2009.

Figure 2.10: *Respondents' Self-Reported Health, by Year*

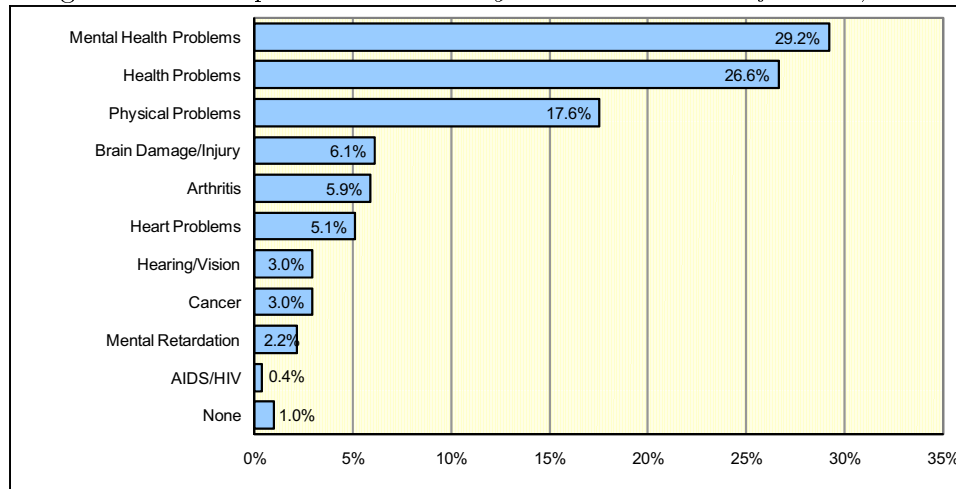


2.6 Disability Identification

Respondents were asked whether they have a disability. Nearly all of the respondents (99.0%) indicated they do, just as they had in 2009 (99.1%). In addition, 73.2% of respondents indicated they have a secondary disability or condition.

2.6.1 Primary Disability

Respondents indicating they are disabled were asked what their disabilities are. Responses were then placed into categories by the research team. For the respondents that answered, a majority of them have primary disabilities that could be classified as mental health (29.2%), health (26.6%), or physical (17.6%) problems, as can be seen in Figure 2.11. The most common specific conditions listed are brain damage/injury (6.1%) and arthritis (5.9%). Many respondents suffering from mental health problems listed depression or schizophrenia as primary disabilities (not shown separately). Only 1.7% of respondents refused to describe their disabilities or did not know what their disabilities were.

Figure 2.11: *Respondents' Primary Disabilities Identification, 2010*

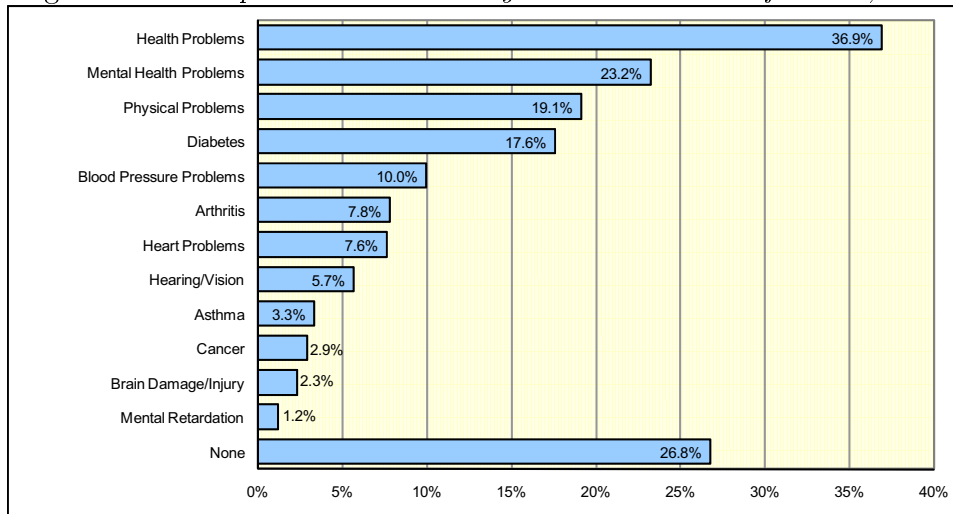
Included in the Health Problems category are asthma, blood pressure, and diabetes.

All responses can be found in Appendix D of this report.

2.6.2 Secondary Disability

Respondents were also asked to list any additional disabilities or medical conditions they have aside from their primary disabilities. Approximately three-quarters of respondents indicated that they have secondary disabilities. Over one-third of respondents reported health conditions apart from their primary disability; nearly 20% reported general physical problems apart from their primary disability; and just over one in six reported diabetes as a secondary disability. See Figure 2.12. A larger percentage of respondents reported having a secondary mental disability in 2010 than in 2009.

Figure 2.12: *Respondents' Secondary Disabilities Identification, 2010*



Section 3

Work Experiences and Attitudes

Unless otherwise noted, results in this section apply to all respondents.

3.1 Work Status

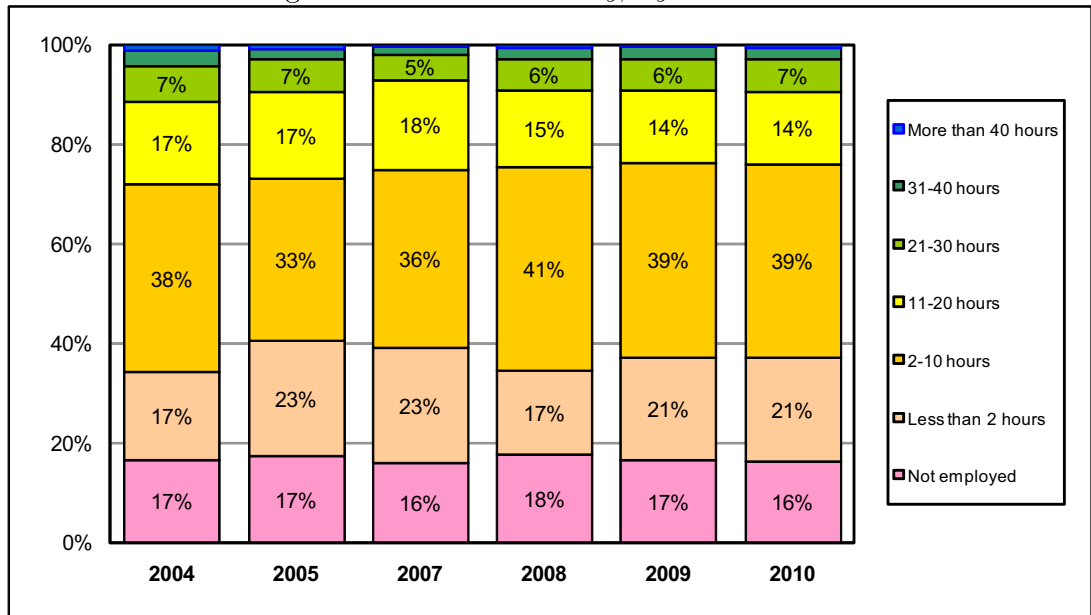
3.1.1 Employment

In 2010, 83.8% of respondents reported currently working for pay. This is about the same as the 83.5% reported in 2009 and 82.7% in 2008. Although being employed is a requirement of the MEPD program, if a member loses work, she/he may be unemployed for up to six months before losing eligibility for the program. It should also be noted that some respondents may not consider themselves employed but are so by MEPD standards.

3.1.2 Work Intensity

The number of hours worked per week has been fairly constant since 2004. Approximately 37.1% of respondents in 2010 and 2009 reported working less than two hours a week (including those not working). These numbers were 34.7% in 2008, 39.1% in 2007, 40.5% in 2005, and 34.2% in 2004. Overall, the average number of hours worked per week is just over seven hours. Figure 3.1 shows the distribution of weekly hours worked for MEPD survey respondents by year.

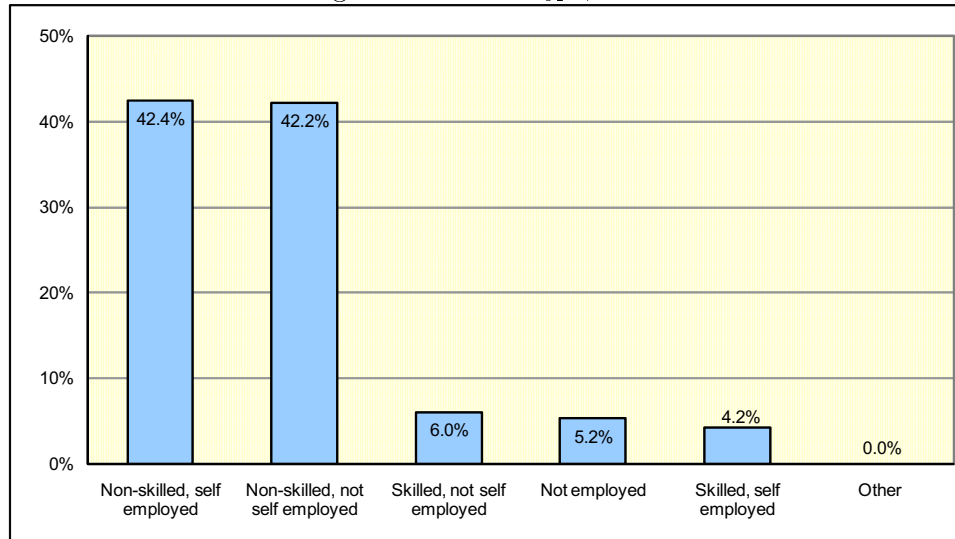
Figure 3.1: *Work Intensity, by Year*



3.1.3 Current Job

Respondents were asked what their current jobs are, or what type of jobs they are looking for if currently unemployed. About 46.6% of respondents are self-employed, down from 49.2% in 2009. These jobs most frequently include childcare, cleaning, lawn work, and driving. They are often performed for a friend, neighbor, or family member. 84.6% of respondents reported having non-skilled jobs, about half of which are self-employed. Of the jobs not considered to be self-employed, the most common are cashier, janitor, and clerical worker. Figure 3.2 shows responses of the 2010 survey.

Figure 3.2: *Job Type, 2010*



3.2 Work History

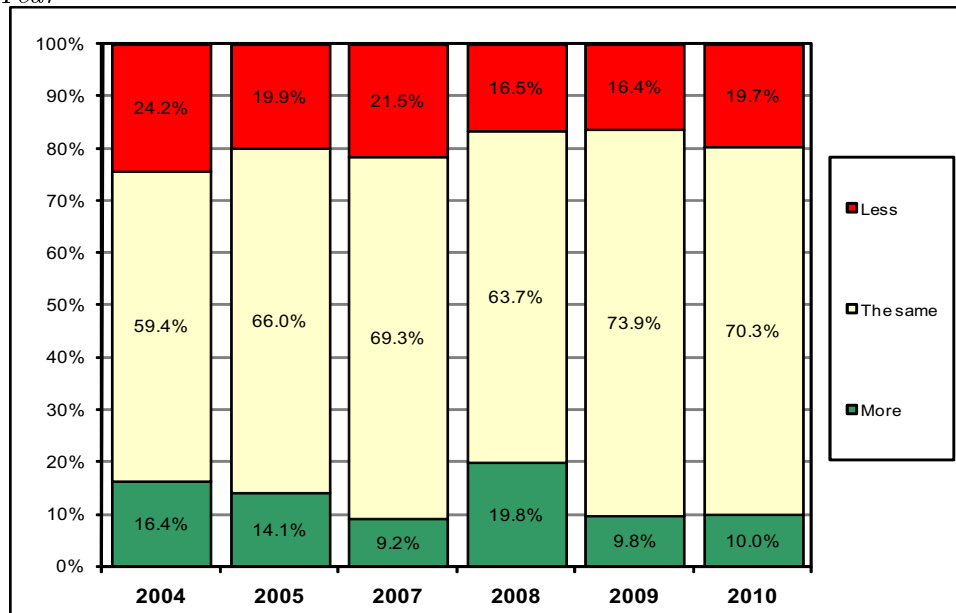
3.2.1 Employment Status

Compared to 2009, a smaller percentage of respondents indicated that they were employed 12 months prior to the time of the survey. About 68.2% of respondents stated they were employed 12 months before the 2010 survey compared to 71.7% for 2009.

3.2.2 Total Earnings

Respondents who indicated they were working 12 months prior to the survey were asked, “Do you earn more, less or about the same as you did 12 months ago?” In 2010, 10.0% of respondents answered “more.” This percentage is virtually identical to the 9.8% of respondents in 2009. See Figure 3.3.

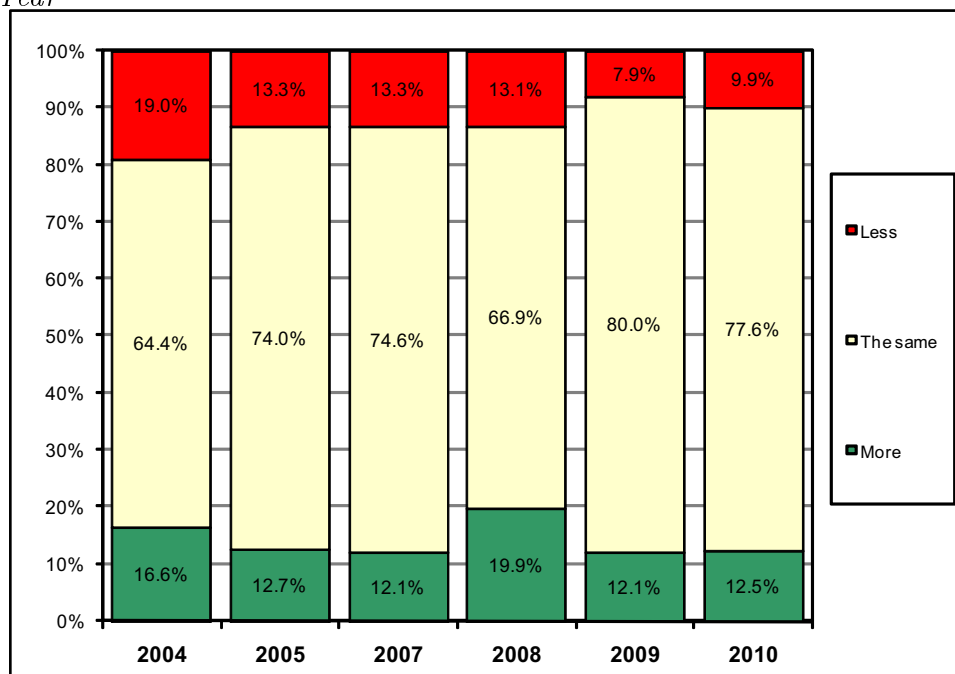
Figure 3.3: *Current Total Earnings Compared to Previous Earnings, by Year*



3.2.3 Hourly Earnings

The same respondents were also asked, “Is your hourly pay more, less, or about the same as it was 12 months ago?” Figure 3.4 shows the respondents saw a change in hourly pay patterns similar to that of 2009. 77.6% of respondents earned the same hourly wage as they did 12 months ago, compared to 80.0% as reported in the 2009 survey.

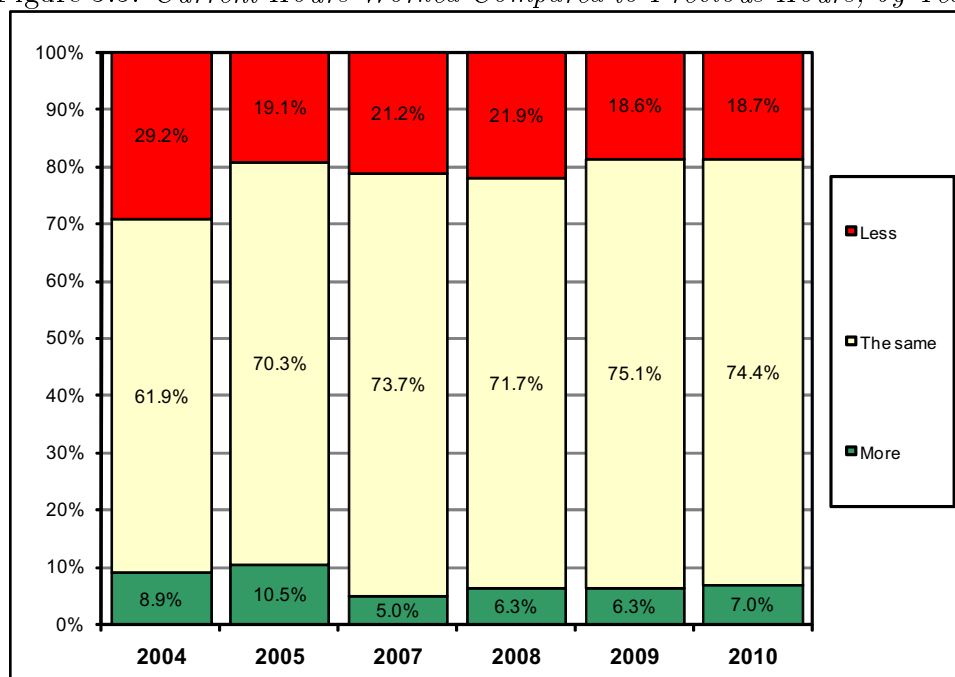
Figure 3.4: *Current Hourly Earnings Compared to Previous Earnings, by Year*



3.2.4 Hours Worked

Respondents who were employed 12 months ago were asked, “Is the number of hours per week that you work more, less, or about the same as it was 12 months ago?” Among the 2010 respondents, 7.0% answered “more,” 74.4% answered “the same,” and 18.7% answered “less.” The distribution of responses in 2010 is similar to most previous years. See Figure 3.5.

Figure 3.5: *Current Hours Worked Compared to Previous Hours, by Year*

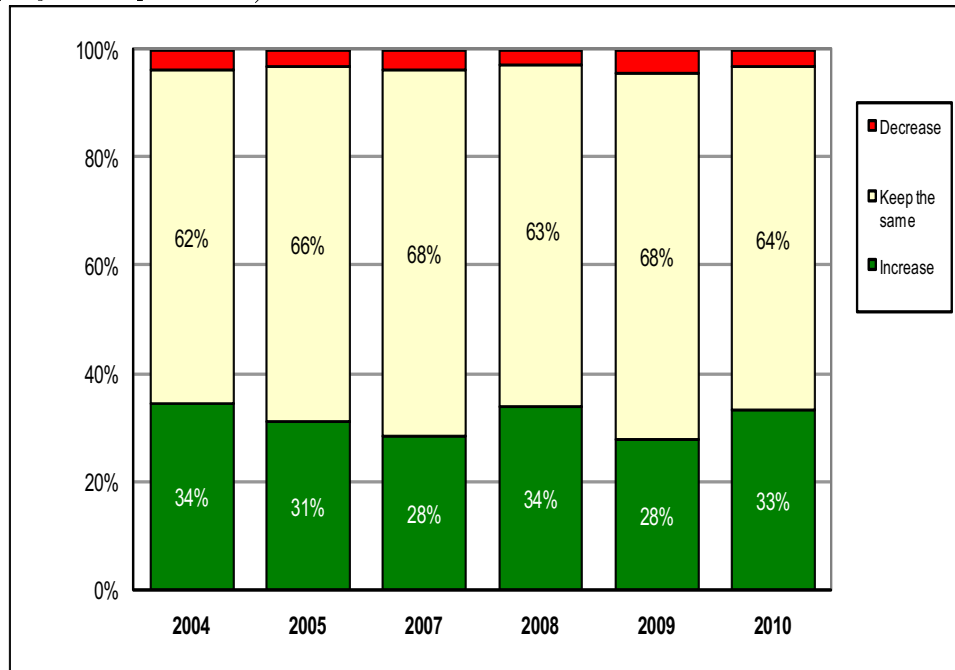


3.3 Attitudes

3.3.1 Current Work Amount

The majority of all currently employed respondents want to keep their current hours worked per week the same, as shown in Figure 3.6. 33.2% of respondents said they wanted to increase their working hours, up from 27.7% in 2009. In 2010, 63.6% of respondents indicated they would like to keep working the same amount. This is less than the 68.0% reported in 2009. The percentage of respondents desiring a decrease in hours remained basically the same.

Figure 3.6: *Attitudes Concerning Current Work Amount, by Year (Employed Respondents)*



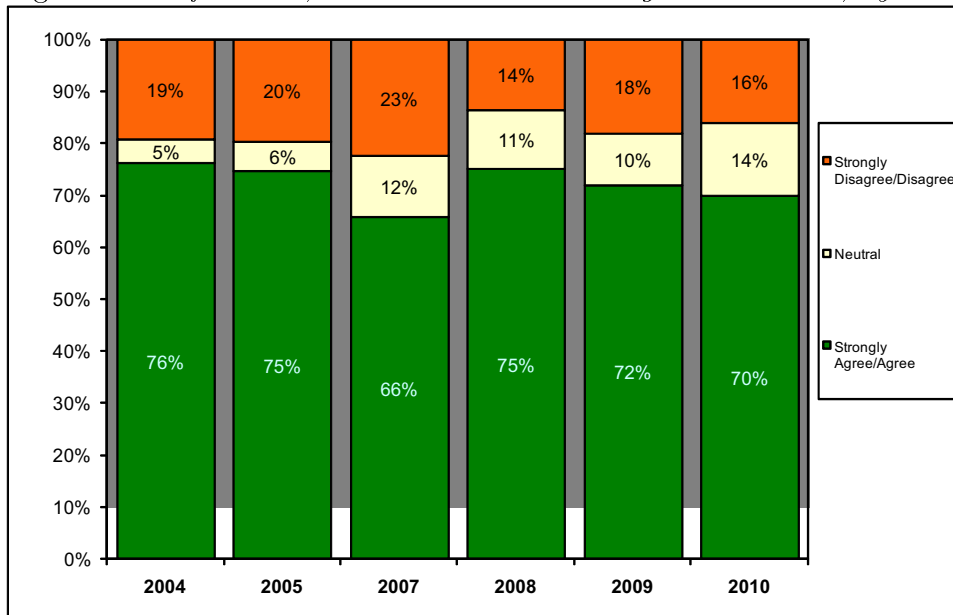
3.3.2 Desire to Work

Of the currently unemployed respondents, 63.3% hope to be working within the next 12 months. This is down from 69.4% in 2009.

3.3.3 “If I could, I would work more.”

Just under 70% of the 2010 survey respondents agree or strongly agree with the statement, “If I could, I would work more.” This is slightly less than in 2009 and 2008 where 72.0% and 75.0% of survey respondents agreed or strongly agreed to the statement, respectively. Fewer respondents disagree or strongly disagree with the statement compared to 2009. Figure 3.7 shows the distribution of responses.

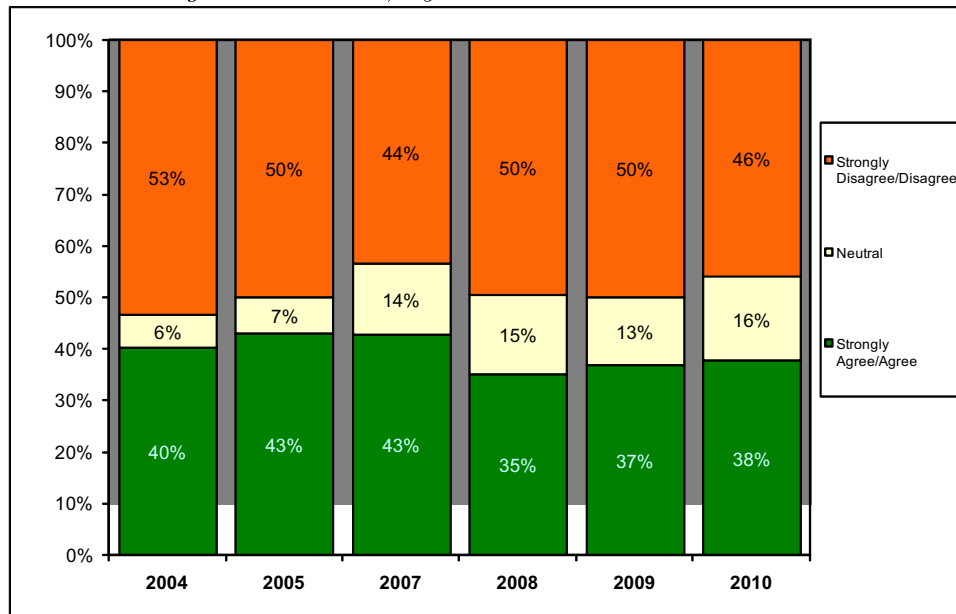
Figure 3.7: “If I could, I would work more”: Agreement Level, by Year



3.3.4 “I just want to work the minimum amount to keep my medical assistance.”

Respondents were also asked to what extent they agreed with the statement, “I just want to work the minimum amount to keep my medical assistance.” The percentage of respondents who agreed or strongly agreed was similar to 2009 (37.6% in 2010, 36.9% in 2009). In the first three years of the survey there was a decreasing percentage who disagreed with this statement. Results from 2008 through 2010 indicate that the trend has stopped. Figure 3.8 shows the distribution of responses for all six surveys.

Figure 3.8: “I just want to work the minimum amount to keep my medical assistance”: Agreement Level, by Year



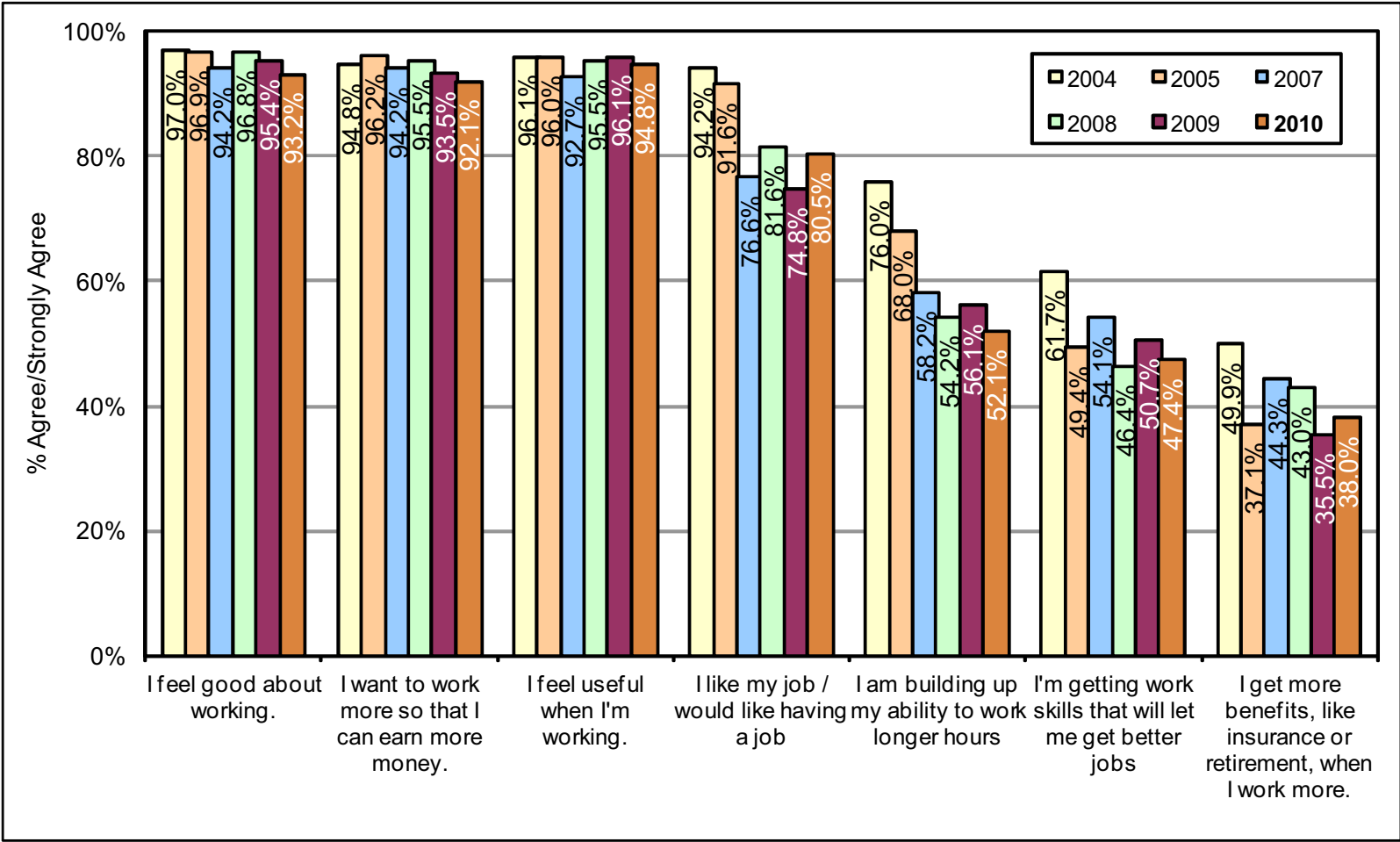
3.3.5 Reasons for Wanting to Work (More)

Employed respondents who indicated they want to increase their hours of work and unemployed respondents who indicated they want to be working within 12 months (see Section 3.3.1) were read a series of statements of reasons as to why they might want to work (or work more), and asked to what extent they agree with each statement. Figure 3.9 shows the percentage of respondents who agree or strongly agree with each statement.

There are differences in the responses of certain statements between years. The percentage of respondents that are building up their ability to work longer hours is the lowest it has ever been. There has been a downward trend for this question in virtually all years since 2004. The percentage of respondents who like their job or would like having a job increased by approximately 6% from 2009.

Aside from the seven statements listed in Figure 3.9, respondents were also asked to mention any additional reasons for wanting to work (or work more). The most common additional reason was for social interactions. For a complete list of responses, see Appendix D.

Figure 3.9: Reasons for Wanting to Work More, by Year



3.3.6 Reasons for Not Wanting to Work (More)

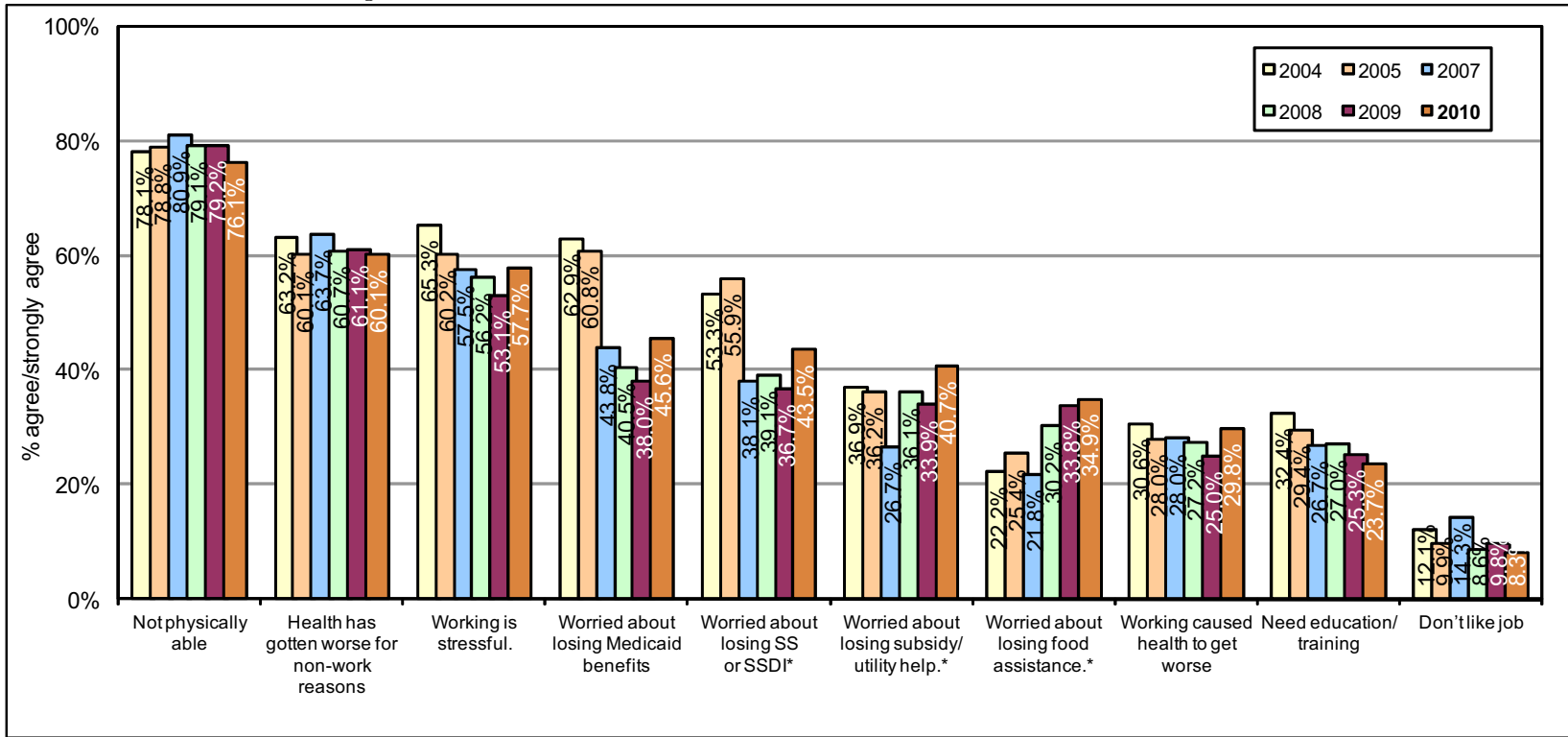
Employed respondents who indicated they want to keep working the same amount or decrease their hours of work, and unemployed respondents who indicated they do not want to be working over the next 12 months were read a series of statements as to why they might not want to work (or work more). They were then asked to what extent they agree with each statement. Figure 3.10 shows the percent of respondents who agree or strongly agree with each statement each year.

Many downward trends ended in 2010. For instance, work-related stress had been on a downward trend since the first survey in 2004, but jumped up 4.6% from 2009 to 57.7%. Also, the percentage of respondents agreeing with the statement, “I am worried about losing Medicaid benefits” saw a spike in 2010. In general, respondents were more worried about losing their Medicaid benefits, Social Security benefits, subsidy utility help, and food assistance than in 2009.

Two differences in mean responses are significant compared to 2009 for those that are employed. Respondents are more likely to agree to the following statements: “I am worried about losing Medicaid” (p-value = 0.023, $n_{2009} = 263$, $n_{2010} = 281$) and “I am worried about losing my Social Security or SSDI monthly check” (p-value = 0.049, $n_{2009} = 256$, $n_{2010} = 276$).

Aside from the ten statements listed in Figure 3.10, the same respondents were also asked to mention any additional reasons for not wanting to work (or work more). Family obligations or communication issues were amongst the reasons cited. For a complete list of responses, see Appendix D.

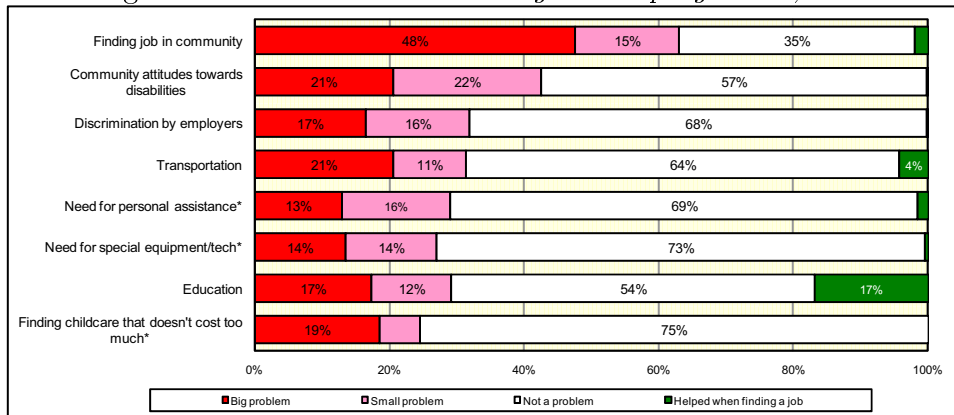
Figure 3.10: Reasons for Not Wanting to Work More, by Year



3.4 Problems in Finding or Keeping a Job

Respondents were read a list of items and asked to rate how much of a problem (or advantage) each one presents in trying to find a job. As illustrated in Figure 3.11, the biggest problem as reported by the survey respondents is finding a job in their communities, with 63.0% in 2010. Note that problem is defined as a response of a big problem or a small problem. The next biggest perceived problem is community attitudes towards disabilities (42.6%), followed by a discrimination by employers (32.0%). These results are consistent with the past two years.

Figure 3.11: *Problems in Finding or Keeping a Job, 2010*



Approximately 30% of respondents indicated that transportation and education were big problems or small problems when finding a job.

It should be noted that a “Does Not Apply” option was added for the categories of personal assistance, special equipment, and childcare for the 2008 survey, as denoted by the three items with asterisks in 3.11. Over two-thirds of respondents (67.2%) said the item about childcare did not apply to them in 2010. 7.7% of respondents gave this response for the two items, personal assistance and special equipment or technology - a noticeable decrease from the reported 17.8% and 20.0% in 2009, respectively. These respondents are not included in the chart or data above. All three of these categories were smaller problems in 2010 compared to 2009.

Finding affordable childcare is the category that is least problematic for all five years the question was asked, even after accounting for the added 2008 “NA” option. The decreased need for special equipment or assistive technology from 2009 to 2010 is highly significant (p-value = .011).

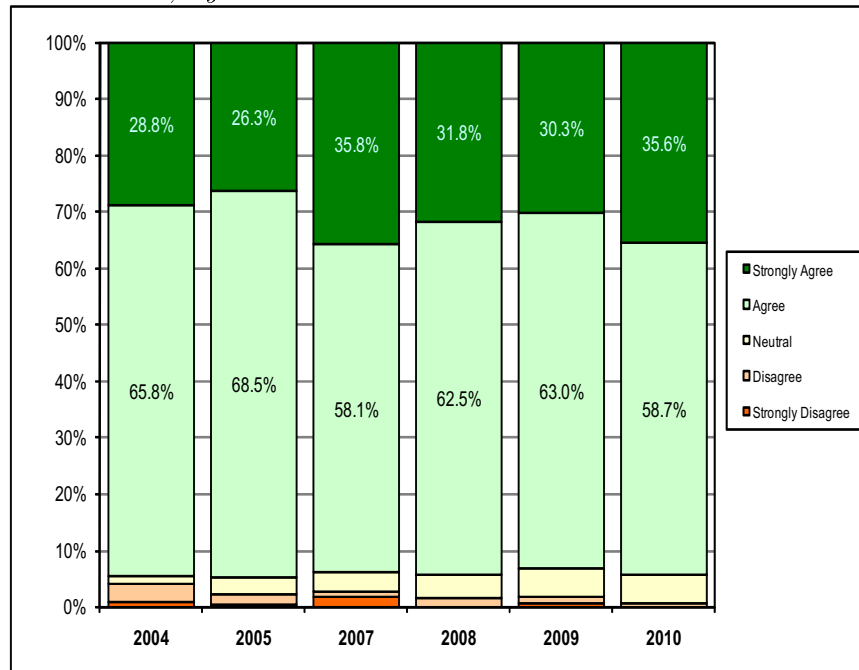
3.5 Work and Medicaid

Results in this section apply only to respondents who indicated at the beginning of the survey that they had heard of MEPD.

3.5.1 “The MEPD program lets me work and stay on Medicaid.”

Respondents were asked to what extent they agree with the statement, “The MEPD program lets me work and stay on Medicaid.” The results from the 2010 and 2009 surveys are very similar, with 94.3% agreeing or strongly agreeing in 2010 and 93.3% agreeing or strongly agreeing in 2009. Figure 3.12 shows the complete distribution of responses for all years.

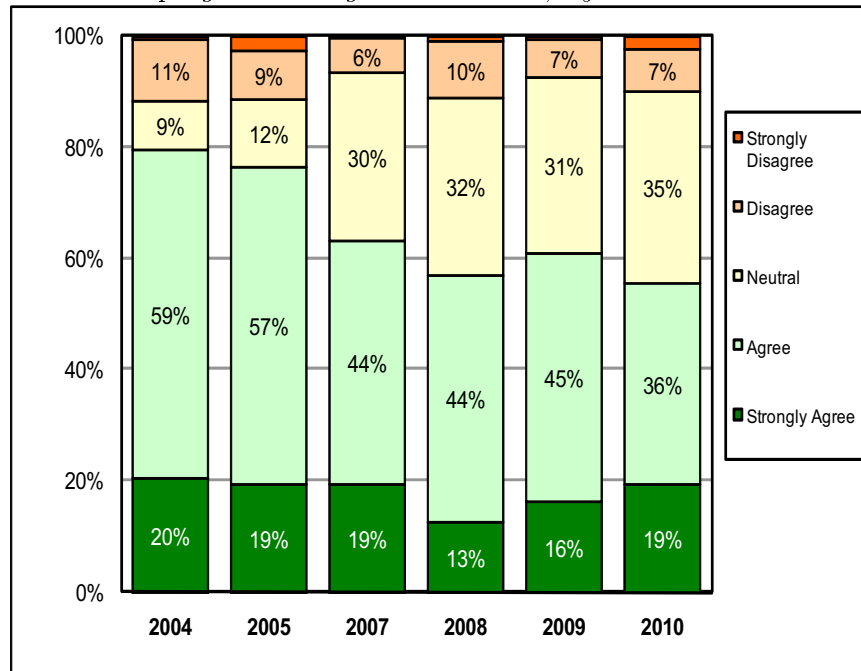
Figure 3.12: “The MEPD program lets me work and stay on Medicaid”: Agreement Level, by Year



3.5.2 “The MEPD program lets me have more money saved than other Medicaid programs.”

Figure 3.13 shows the responses to the statement, “The MEPD program lets me have more money saved than other Medicaid programs.” The percentage of respondents who agree or strongly agree with this statement moderately decreased from 2009 to 2010, with 55.6% of 2010 respondents agreeing or strongly agreeing, compared to 60.9% in 2009. Results from 2010 indicate a return to the decreasing trend of agreement to this statement. Since 2004, we’ve seen the percentage of respondents agreeing or strongly agreeing with this statement steadily decline from 79.5% in 2004 to the current percent of 55.6%.

Figure 3.13: “The MEPD program lets me have more money saved than other Medicaid programs”: Agreement Level, by Year



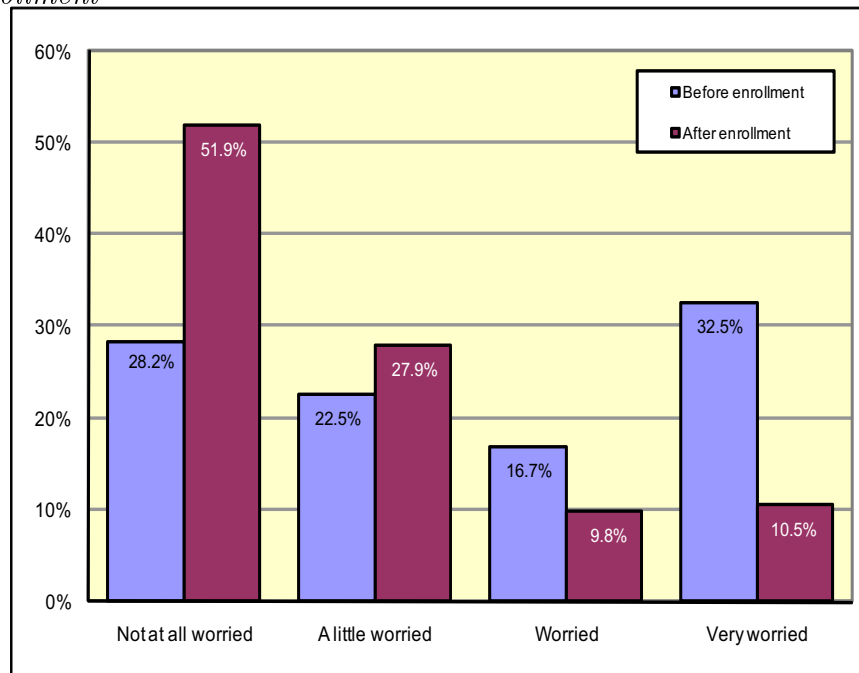
It should be noted that there has been a decreasing trend in percentage of respondents who gave a response of “Don’t Know”: 25.9% in 2007, 16.8% in 2008, 16.7% in 2009, and 9.4% in 2010. These respondents are not accounted for in the above figure.

3.5.3 Medicaid Eligibility Concerns

It is of interest to find out whether members are worried that they could lose their Medicaid assistance because they work or if they get jobs. Respondents were asked, “*Before* you enrolled in MEPD, were you worried that you could lose your Medicaid if you worked or got a job?” and “Now that you have MEPD for medical assistance, how worried are you that you might lose your Medicaid because you work?” Figure 3.14 illustrates how concerns waned after enrollment in MEPD.

It should also be noted that for all years, the percentage of respondents who were very worried decreased noticeably after enrollment in MEPD compared to before enrollment. Results for 2010 can be seen in Figure 3.14. They are similar to those found in 2009.

Figure 3.14: *Concern regarding Medicaid Eligibility: Before and After Enrollment*



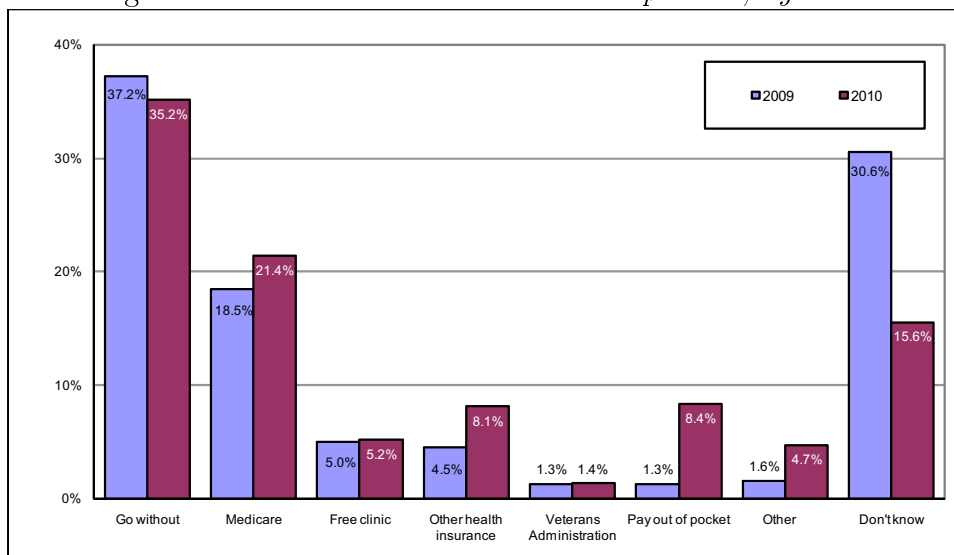
3.5.4 Social Security Benefit Concerns

In addition to the worry of losing Medicaid, respondents were also asked how concerned they are that they could lose their Social Security benefits because they work. 13.7% are very worried, 7.0% are worried, 20.0% are a little worried, and 58.2% are not worried at all. There are no major differences between 2009 and 2010.

3.5.5 Other Medical Care Options

Respondents were also asked how they would get medical care if they didn't have MEPD. A large portion (35.2%) of the respondents indicated they would go without medical care. 15.6% don't know what they would do, an appreciable decrease from 2009 when 30.6% reported not knowing what they would do. The percentage of respondents reporting they would get other health insurance nearly doubled from 4.5% in 2009 to 8.1% in 2010. Also, the percentage of respondents that said they would pay out of pocket greatly increased, from 1.3% in 2009 to 8.4% in 2010. Note that "Pay out of pocket" was not an explicit option prior to the 2010 survey. It was added because numerous individuals in previous surveys stated this was how they would get medical care if they didn't have MEPD. Thus, the increased response for this option from 2009 to 2010 may be a result of this change. See Figure 3.15 for the complete distribution of responses to this question.

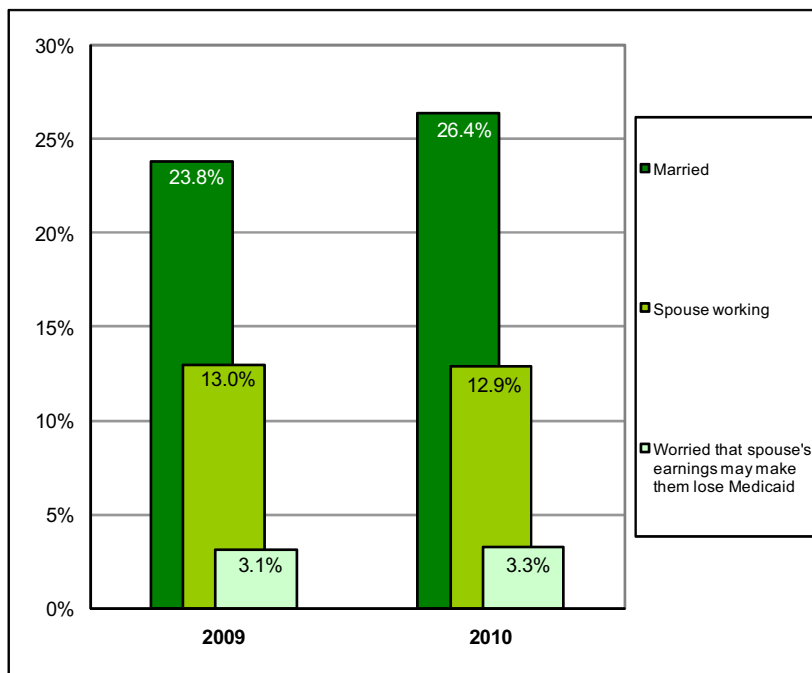
Figure 3.15: *Alternatives to MEPD Comparison, by Year*



3.5.6 Member Spouse Employment

As mentioned in section 2.4.6, 26.4% of 2010 respondents are married. In addition, 12.9% of survey respondents are married with their spouses working, virtually unchanged from the 13.0% replying in 2009. See Figure 3.16.

Figure 3.16: *Marital Status and Employment of Respondents' Spouses, by Year*



Of respondents who have spouses who work, 26.2% say they are worried that their spouses' earnings might make them lose their Medicaid benefits, similar to previous years.

Section 4

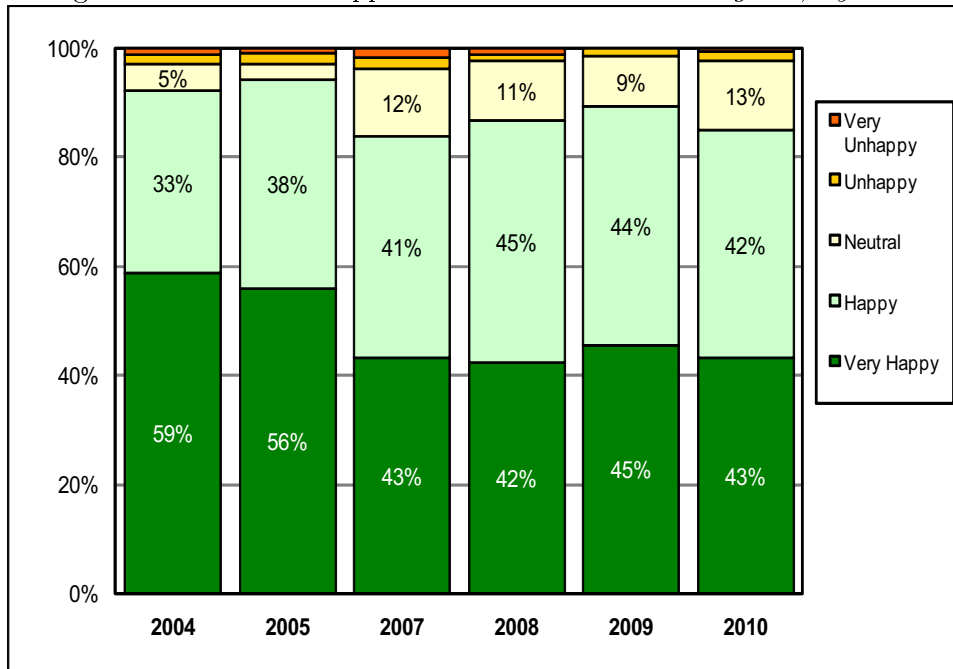
Member Satisfaction with MEPD

Results in this section apply only to respondents familiar with MEPD (question 1 on the survey), unless otherwise noted.

4.1 Overall Member Happiness with MEPD

Member satisfaction is one of the most important indicators of how well the MEPD program is meeting the needs of its members. Because of this, survey respondents were directly asked how happy they are with MEPD. In 2010, 84.8% of respondents indicated they are happy or very happy with MEPD, a result similar to previous years. See Figure 4.1 for the full distribution of responses.

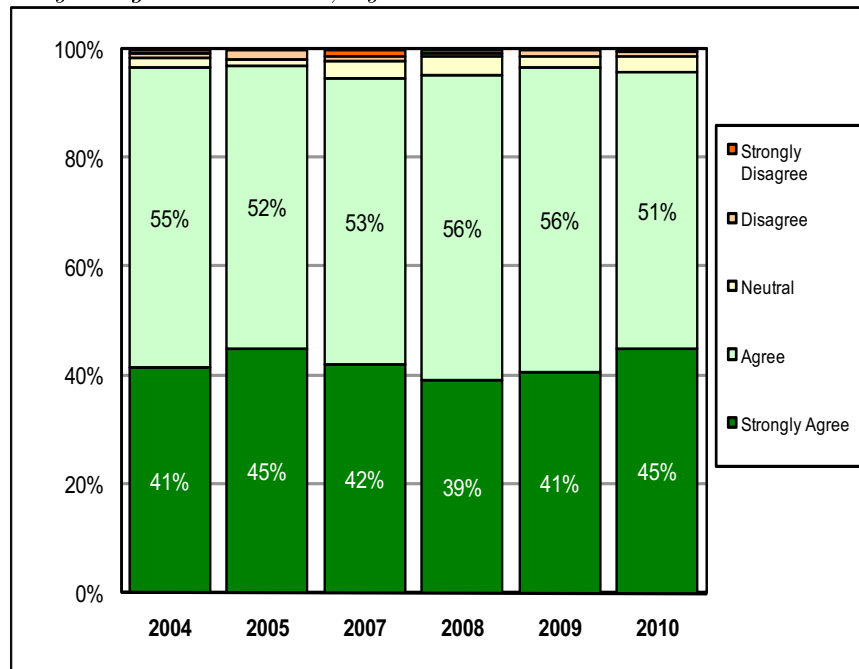
Figure 4.1: *Overall Happiness with the MEPD Program, by Year*



4.2 Likelihood to Recommend

Respondents were also asked to what degree they agree with the statement, “I would recommend the MEPD program to people with a disability.” Figure 4.2 shows the results of this question. In 2010, 95.7% of respondents agree or strongly agree with this statement. This is similar to 2009 (96.8%).

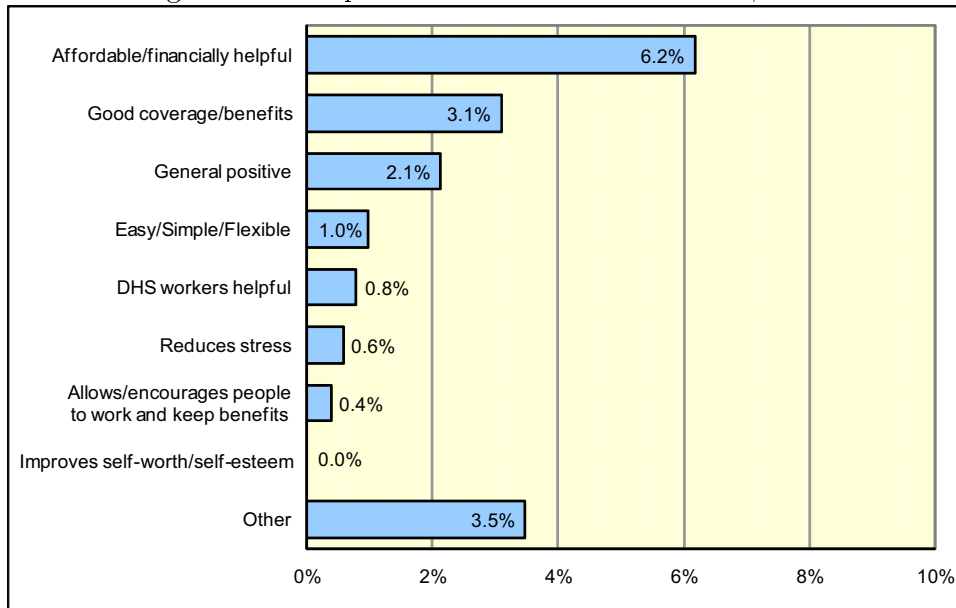
Figure 4.2: *“I would recommend the MEPD program to people with a disability”: Agreement Level, by Year*



4.3 Positive Comments

All survey respondents were asked if there is anything they like about the MEPD program. In 2010, only 17.4% indicated there is. This continues the sudden decline that appeared in 2009 when 39.1% indicated there is. Respondents were also asked to identify what they specifically like about the program. The most common likes of the program are its affordability, financial help, and it has good coverage and benefits. See Figure 4.3.

Figure 4.3: *Respondents' Likes About MEPD, 2010*



The following are some positive comments from survey respondents:

- “(MEPD) provides a better quality of life. I am able to be more active and give back to the community.”
- “It gives me a few extra dollars a month. I can keep my medicaid and if it wasn’t for that, I wouldn’t be able to take care of my health.”
- “Gives people the opportunity to get medical assistance and keep active working.”

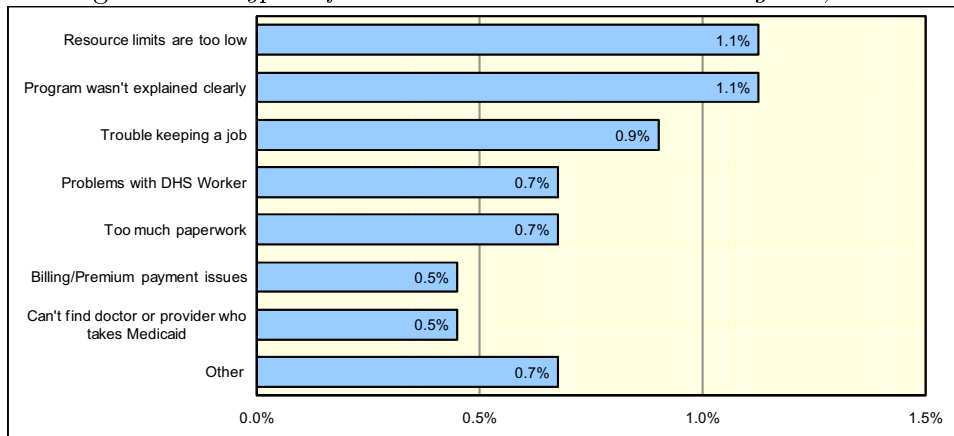
Section 5

Member Problems and Suggestions

5.1 Types of Problems with MEPD

When asked whether they have experienced any problems with MEPD, 5.2% of the 2010 respondents familiar with MEPD indicated they have, less than the 8.3% in 2009. The most common problems listed were low resource limits and unclear explanations of the program. See Figure 5.1 for a categorization of problems mentioned.

Figure 5.1: *Types of Problems with the MEPD Program, 2010*

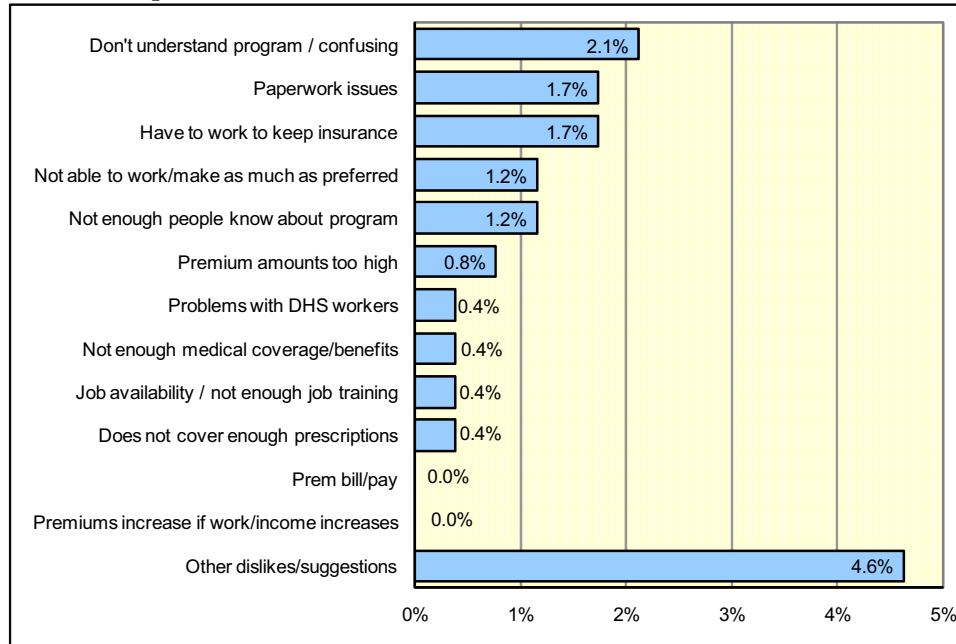


5.2 Dislikes

All respondents were asked if there was anything they dislike about MEPD. The percentage of respondents answering “yes” decreased from 16.1% in 2009 to 15.8% in 2010. This is the lowest percentage answering “yes” in all six years of the survey. The most common dislikes are that members do not fully understand the program and paperwork issues.

It should be noted that changes were made to the reapplication process for MEPD members during 2008. The number of reviews for MEPD eligibility and premium amounts were reduced to only once a year for each member. This made the review process and program easier to understand for current and future members, and members continue to have access to their workers on an “as needed” basis in case of questions. In 2010, 1.7% of respondents cited paperwork issues as a dislike. This is a decrease from 2.6% in 2009, 3.2% in 2008, and 5.2% in 2007. See Figure 5.2 for a breakdown by type of dislike.

Figure 5.2: *Respondents’ Dislikes About MEPD, 2010*



Following are several representative answers:

- “Too much information sent in the mail from MEPD.”
- “The limits on the amount of money you can earn are too low.”
- “Things need to be explained more clearly in person.”

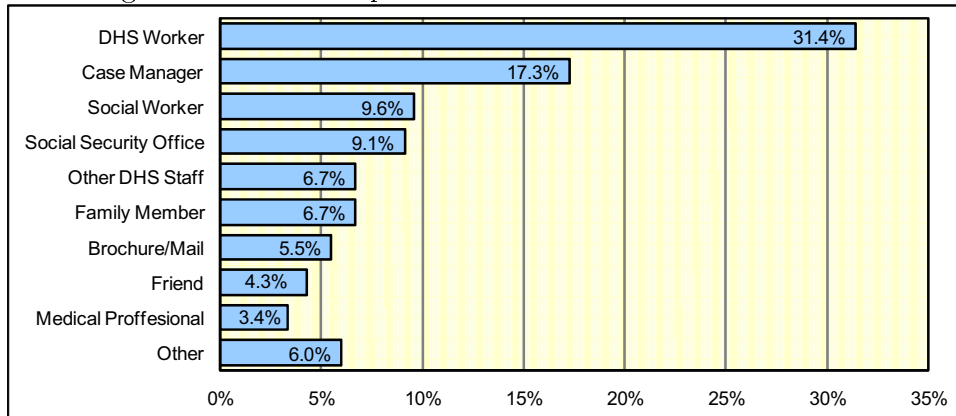
Section 6

Intake and Enrollment

6.1 How Members First Learned of MEPD

Respondents familiar with MEPD were asked how they first learned about the program. The results are shown in Figure 6.1. In the 2010 survey, “Social Worker,” “Social Security Office,” and “Provider/Other Agency” were added as potential answers, while “Benefit planner,” “Job coach,” and “Community workshop or training” were removed. 41.0% learned about MEPD from their DHS case worker or social worker. Many others learned of the program through a case manager. The percentage of respondents who learned about MEPD through brochure/mail decreased from last year - from 9.4% in 2009 to 5.5% in 2010.

Figure 6.1: *How Respondents First Learned About MEPD*

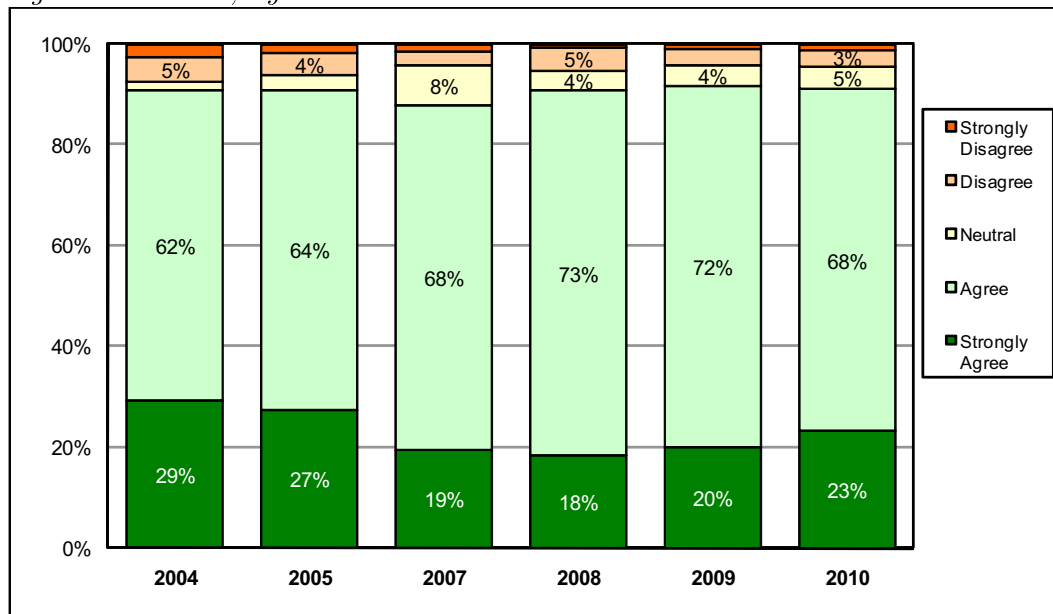


6.2 Satisfaction with Applying for MEPD

6.2.1 Overall Satisfaction with Applying

Respondents familiar with MEPD were asked to rate the extent to which they agree with the statement, “I’m satisfied with how I applied for the MEPD program.” Figure 6.2 shows that 91.0% agree or strongly agree, a figure quite similar to previous years. Average satisfaction is slightly higher than in 2008 and 2009.

Figure 6.2: “I’m satisfied with how I applied for the MEPD program”: Agreement Level, by Year



6.2.2 Application Process Evaluation

Respondents familiar with MEPD were asked to rate the extent to which they agree with a series of statements regarding the process of applying for MEPD. The highest rated attribute is, “I am satisfied with how I applied for the MEPD program” – 91.0% agree or strongly agree. The lowest rated attribute is, “I understand how much I can save and stay on MEPD” – 28.7% of members disagree or strongly disagree with this statement. Note that lowest rated attribute is defined as the attribute associated with the highest percentage of respondents who disagree or strongly disagree with a statement.

Figure 6.3 shows the percentage of respondents who either agreed or strongly agreed with each statement for each survey year. Results in 2010 are similar to 2009. The four-year trend of decreased understanding on how much members can earn and stay on MEPD ended in 2010 with a 7.4% increase in understanding compared to 2009. Also, 80.9% of respondents agree or strongly agree that applying was easy, a slight decrease from 83.5% in 2009.

Figure 6.3: Satisfaction with Elements of Application Process, by Year

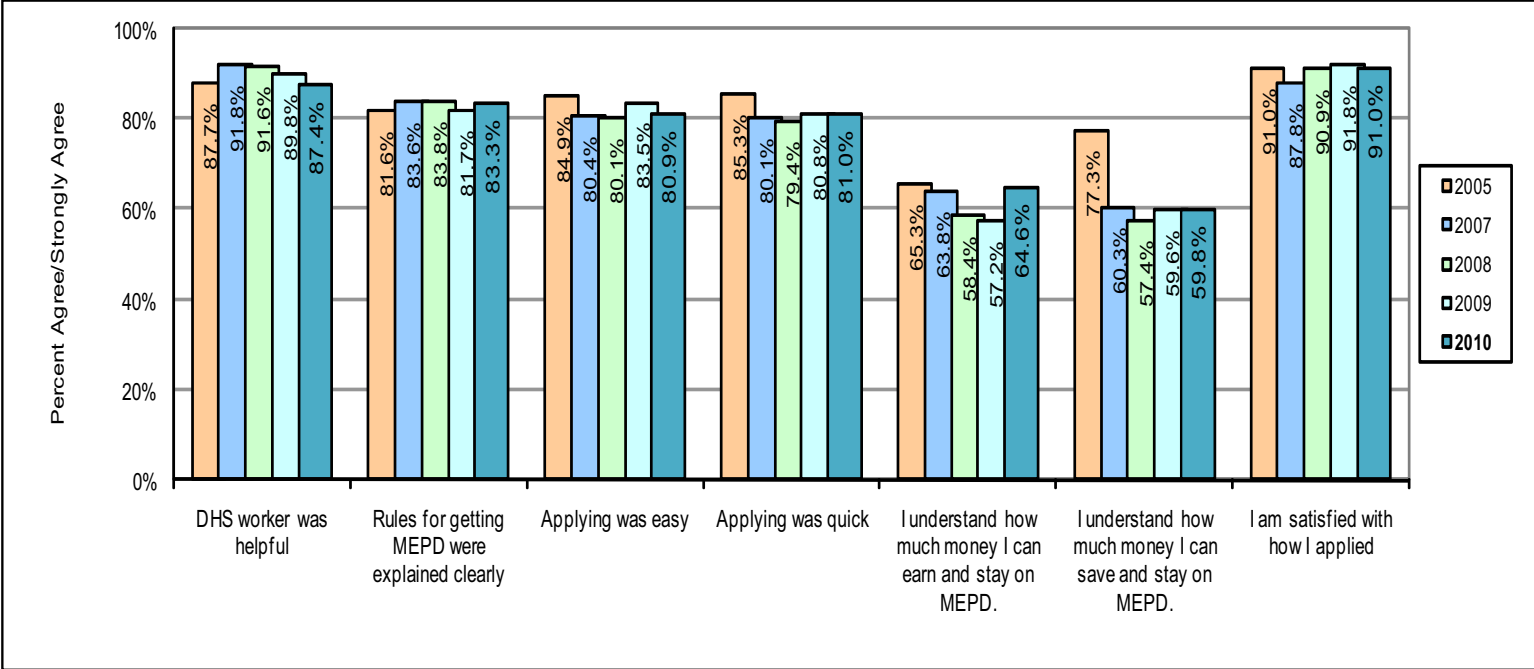
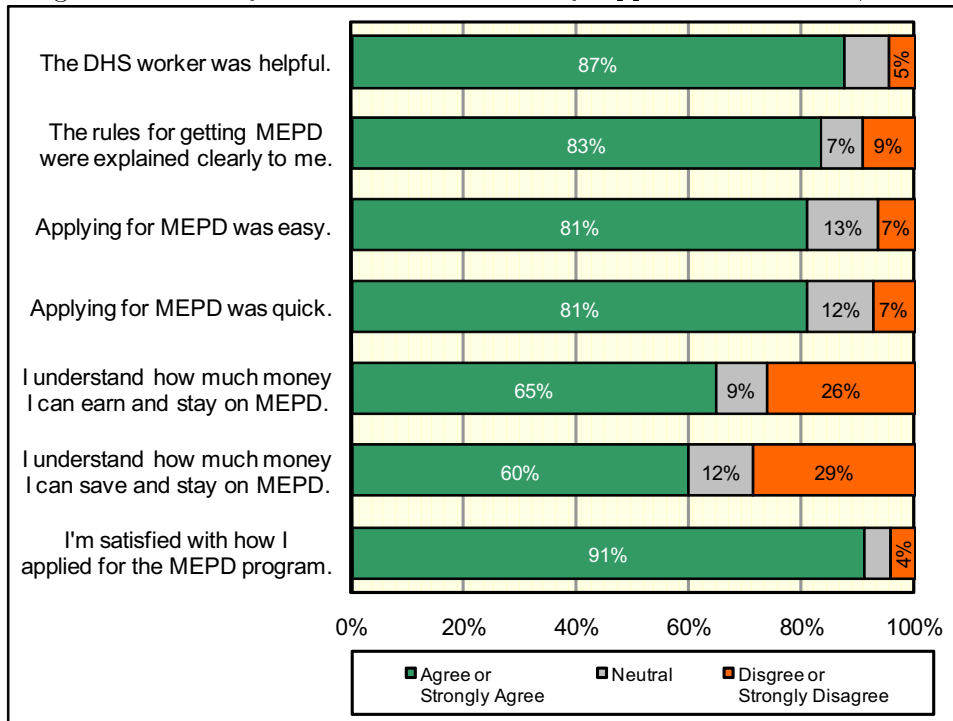


Figure 6.4 presents ratings for 2010 respondents on each of these seven attributes as well as the overall satisfaction with the enrollment process. For clarity, the top two rating categories for each item have been collapsed so that “Agree” and “Strongly Agree” are combined; “Disagree” and “Strongly Disagree” are similarly collapsed.

Figure 6.4: *Satisfaction with Elements of Application Process, 2010*



6.3 Comments on Enrollment

The same respondents were asked if they have anything else to say about applying for MEPD. Only 9 respondents provided comments to this question. Four people indicated they do not understand the program, three indicated they didn't believe that they were currently on MEPD, one indicated the program should have automatic withdrawals from checking accounts, and one person requested a summary report. For the complete list of verbatim responses, see Appendix D.

Appendix A

Survey Instrument

2010 Iowa MEPD Program Evaluation

March 9, 2010

INTRO

Hello, my name is _____. I am calling from the **University of Northern Iowa**. Recently the Department of Human Services, or the DHS, sent a letter to [Respondent Name] to tell him/her that we might be calling. May I speak to [Respondent Name]?

- 1 = Yes, Speaking [**Go to RESPONDENT**]
- 2 = Yes, coming to the phone [**Go to INTRO2**]
- 3 = No, not available [**Schedule callback**]
- 4 = No, not at this number [**Go to NEWNUM**]

NEWNUM

Do you have a telephone number that he/she can be reached at today?

- 1 = Yes [**Record number. Thank you very much for your help. Hang up. Code 4410, record new number in message**]
- 2 = No [**Thank you for your time. Hang up. Code 4110**]

RESPONDENT

Recently the Department sent you a letter asking for your help in a research study about the Medicaid for Employed People with Disabilities, or M-E-P-D, program.
[**Go to RECEIVE**]

INTRO2

Hello, my name is _____. I am calling from the **University of Northern Iowa**. Recently the Department of Human Services, or the DHS, sent you a letter asking for your help in a research study.

RECEIVE

Did you get a letter about the MEPD study?

- 1 = Yes
- 2 = No [**Go to LETTER**]

READ

Did you have a chance to read the letter?

- 1 = Yes [**Go to CONFIDENTIALITY**]
- 2 = No

LETTER

I'm sorry you did not get a chance to read the letter. It explained the study and told you that we might be calling. Would you like me to tell you what was in the letter?

- 1 = Yes, read letter summary [**Go to CONFIDENTIALITY**]
- 2 = No, but continue [**Go to CONFIDENTIALITY**]
- 3 = No, refuses to continue [**Code 2112**]

CONFIDENTIALITY This is a study about the Medicaid for Employed People with Disabilities, or M-E-P-D, program. MEPD allows working people with disabilities to keep their Medicaid health care benefits. Your help is very important. We are interested in learning what you think about this program. The Department of Human Services and the MEPD Advisory Committee need your help to try to make the program better. We want you to know that if you choose not to help us today, your benefits will not be changed. And if you do want to help, your benefits will not change. If we come to any question you do not want to answer, just let me know and we'll skip it. Your answers are private. Everyone's answers will be combined in a summary report. If you have any questions about the study, I would be happy to give you the name and telephone number of the MEPD program manager at DHS. The interview takes most people about 15 minutes. If at any point during the survey you do not wish to continue, let me know. I would like to start now. Is this a good time? **[Go to Q1]**

[CONTACT INFORMATION: Medicaid Member Services at the Department of Human Services PHONE: [1-800-338-8366]

Intake and Enrollment Process

- 1) Have you heard of MEPD, sometimes called Medicaid for Employed People with Disabilities, "mep-ED" or the Medicaid Buy-in?
 - Yes
 - No ► *(skip to question 11)*
 - Don't Know ► *(skip to question 11)*
 - Refused ► *(skip to question 11)*

- 2) How did you learn about MEPD? (Wait for response, then prompt) *(choose one)*
 - My DHS worker
 - Other DHS staff
 - Family member
 - Friend
 - Social Worker
 - Social Security Office
 - Brochure
 - Case Manager
 - Medical professional / Doctor
 - Provider /Other Agency
 - Other **[SPECIFY]**
 - Don't Know
 - Refused

3) Now I'd like to ask you a few questions about applying for MEPD. I'll read some statements, and for each one, please tell me if you strongly disagree, disagree, are neutral, agree or strongly agree.

Statement	Strongly Disagree	Disagree	Neutral	Agree	Strongly Agree	Don't Know	Refused
a) Applying for MEPD was easy. Would you...	1	2	3	4	5	7	9
b) The rules for getting MEPD were explained clearly to me. Would you...	1	2	3	4	5	7	9
c) The DHS worker was helpful.	1	2	3	4	5	7	9
d) I understand how much money I can save and stay on MEPD.	1	2	3	4	5	7	9
e) I understand how much money I can earn and stay on MEPD.	1	2	3	4	5	7	9
f) Applying for MEPD was quick.	1	2	3	4	5	7	9
g) I'm satisfied with how I applied for the MEPD program	1	2	3	4	5	7	9

4) Do you have anything else to say about applying for the MEPD program?

- Yes [SPECIFY]
- No
- Don't Know
- Refused

MEPD Program Evaluation

- 5) I'll now read some statements that may describe the MEPD program. For each statement, please tell me if you strongly disagree, disagree, are neutral, agree or strongly agree.

(If they seem to hesitate on any question, remind respondents that their answers are confidential)

Statement	Strongly Disagree	Disagree	Neutral	Agree	Strongly Agree	Don't Know	Refused
a) The MEPD program lets me work and stay on Medicaid. Would you...	1	2	3	4	5	7	9
b) The MEPD program lets me have more money saved than other Medicaid programs. Would you...	1	2	3	4	5	7	9
c) If I could, I would work more.	1	2	3	4	5	7	9
d) I just want to work the minimum amount to keep my Medicaid.	1	2	3	4	5	7	9
e) I would recommend the MEPD program to people with disabilities.	1	2	3	4	5	7	9

- 6) **Before** you enrolled in MEPD, were you worried that you could lose your Medicaid if you worked or got a job? Were you not at all worried, just a little worried, worried, or very worried?

1	2	3	4	7	9
Not at all worried	Just a little worried	Worried	Very worried	Don't Know	Refused

- 7a) Now that you have MEPD for medical assistance, how worried are you that you might lose your Medicaid because you work? Are you not at all worried, just a little worried, worried, or very worried?

1	2	3	4	7	9
Not at all worried	Just a little worried	Worried	Very worried	Don't Know	Refused

7b) Now that you have MEPD, how worried are you that you could lose your monthly Social Security check because you work? Are you not at all worried, just a little worried, worried, or very worried?

1	2	3	4	7	9
Not at all worried	Just a little worried	Worried	Very worried	Don't Know	Refused

8) Have you had any problems with the MEPD program?

- Yes
- No ► (skip to question 10a)
- Don't Know ► (skip to question 10a)
- Refused ► (skip to question 10a)

9) What sorts of problems have you had? (Wait for respondent to say something, use list to prompt if required. Select all that apply.)

- Program wasn't explained clearly
- Availability of jobs
- Trouble keeping a job
- Too much paperwork
- Resource limits are too low
- Problems with case manager or social worker
- Problems with DHS worker
- Can't find doctor or provider who takes Medicaid
- Other reason [SPECIFY]
- Don't Know
- Refused

10a) How happy are you with the MEPD program? Would you say you are very unhappy, unhappy, neither happy nor unhappy, happy or very happy?

1	2	3	4	5	7	9
Very Unhappy	Unhappy	Neutral	Happy	Very Happy	Don't Know	Refused

10b) How would you get medical care if you didn't have this program?

- Medicare
- IowaCare
- Other health insurance
- Free clinic
- Go without
- V.A. / Veterans Administration
- Pay out of pocket
- Other [SPECIFY]
- Don't know

- Refused

Attitudes Towards Work

11) Do you currently do any work for pay?

- Yes
- No ► *(skip to question 13b)*
- Don't Know ► *(skip to question 13b)*
- Refused ► *(skip to question 13b)*

12a) About how many hours do you work every week? **[SPECIFY]**

(Wait for response.)

[] = Number of hours worked {0-76} ***If Q12a is < 77 skip to Q13a***

77. Don't Know

99. Refused

12b) I will give you choices about the number of hours you work. Please let me know when I say the number of hours that you work each week.

- Less than 2 hours
- 2-5
- 6-10
- 11-20
- 21-30
- 31-40
- More than 40 hours
- Don't Know
- Refused

13a) Do you want to increase, decrease, or keep the same number of hours you work now?

- Increase ► *(skip to question 14aa)*
- Decrease ► *(skip to question 15aa)*
- Keep the same ► *(skip to question 15aa)*
- Don't Know ► *(skip to question 16)*
- Refused ► *(skip to question 16)*

13b) Do you want to be working over the next twelve months?

- Yes ► *(skip to question 14ba)*
- No ► *(skip to question 15ba)*
- Don't Know ► *(skip to question 15ba)*
- Refused ► *(skip to question 15ba)*

14a) I'll now read some statements about why you might want to work more. Once again, for each statement, please tell me if you strongly disagree, disagree, are neutral, agree or strongly agree.

Statement	Strongly Disagree	Disagree	Neutral	Agree	Strongly Agree	Don't Know	Refused
a) I want to work more because I like my job. Would you ...	1	2	3	4	5	7	9
b) I want to work more so that I can earn more money. Would you ...	1	2	3	4	5	7	9
c) I feel good about working.	1	2	3	4	5	7	9
d) I feel useful when I'm working.	1	2	3	4	5	7	9
e) I'm getting work skills that will let me get better jobs.	1	2	3	4	5	7	9
f) I am building up my ability to work longer hours.	1	2	3	4	5	7	9
g) I get more benefits, like insurance or retirement, when I work more.	1	2	3	4	5	7	9
h) Any other reason?							
<input type="checkbox"/> Yes [SPECIFY]							
<input type="checkbox"/> No							
<input type="checkbox"/> Don't Know							
<input type="checkbox"/> Refused							

[ASK: "Is it okay to go on with the questions?"]

[SKIP TO Q16]

14b) I'll now read some statements about why you might want to be working. Once again, for each statement, please tell me if you strongly disagree, disagree, are neutral, agree or strongly agree.

Statement	Strongly Disagree	Disagree	Neutral	Agree	Strongly Agree	Don't Know	Refused
a) I would like having a job. Would you ...	1	2	3	4	5	7	9
b) I want to work so that I can earn money. Would you ...	1	2	3	4	5	7	9
c) I would feel good about working.	1	2	3	4	5	7	9
d) I would feel useful when working.	1	2	3	4	5	7	9

- | | | | | | | | |
|---|---|---|---|---|---|---|---|
| e) I would get work skills that would let me get better jobs. | 1 | 2 | 3 | 4 | 5 | 7 | 9 |
| f) I would be able to build up my ability to work longer hours. | 1 | 2 | 3 | 4 | 5 | 7 | 9 |
| g) I would get more benefits, like insurance or retirement if I worked. | 1 | 2 | 3 | 4 | 5 | 7 | 9 |
- h) Any other reason?
- Yes [SPECIFY]
 - No
 - Don't Know
 - Refused

[ASK: "Is it okay to go on with the questions?"]

[SKIP TO Q16]

15a) I'll now read some statements about why you might not want to work more than you do now. Again, for each statement, please tell me if you strongly disagree, disagree, are neutral, agree or strongly agree.

Statement	Strongly Disagree	Disagree	Neutral	Agree	Strongly Agree	Don't Know	Refused	N/A
a) I am worried about losing Medicaid. Would you ...	1	2	3	4	5	7	9	
b) I am worried about losing my Social Security or SSDI monthly check. Would you ...	1	2	3	4	5	7	9	8
c) I am worried about losing food assistance.	1	2	3	4	5	7	9	8
d) I am worried about losing other help like rent subsidy or utility help.	1	2	3	4	5	7	9	8
e) Working is stressful.	1	2	3	4	5	7	9	
f) I don't like my job.	1	2	3	4	5	7	9	
g) My health has gotten worse for reasons not caused by working.	1	2	3	4	5	7	9	
h) Not physically able to work more	1	2	3	4	5	7	9	
i) I need more education or training	1	2	3	4	5	7	9	
j) Working has caused my health to get worse.	1	2	3	4	5	7	9	
k) Any other reason?								
<input type="checkbox"/> Yes [SPECIFY]								
<input type="checkbox"/> No								
<input type="checkbox"/> Don't Know								
<input type="checkbox"/> Refused								

[ASK: "Is it okay to go on with the questions?"]

[SKIP TO Q16]

15b) I'll now read some statements about why you might not want to work. Again, for each statement, please tell me if you strongly disagree, disagree, are neutral, agree or strongly agree.

Statement	Strongly Disagree	Disagree	Neutral	Agree	Strongly Agree	Don't Know	Refused	N/A
a) I am worried about losing Medicaid. Would you ...	1	2	3	4	5	7	9	
b) I am worried about losing my Social Security or SSDI monthly check. Would you ...	1	2	3	4	5	7	9	8
c) I am worried about losing food assistance.	1	2	3	4	5	7	9	8
d) I am worried about losing other help like rent subsidy or utility help.	1	2	3	4	5	7	9	8
e) Working is stressful.	1	2	3	4	5	7	9	
f) I didn't like jobs I have had before.	1	2	3	4	5	7	9	
g) My health has gotten worse for reasons not caused by working.	1	2	3	4	5	7	9	
h) Not physically able to work	1	2	3	4	5	7	9	
i) I need more education or training	1	2	3	4	5	7	9	
j) Working would cause my health to get worse.	1	2	3	4	5	7	9	
k) Any other reason?								
<input type="checkbox"/> Yes [SPECIFY]								
<input type="checkbox"/> No								
<input type="checkbox"/> Don't Know								
<input type="checkbox"/> Refused								

[ASK: "Is it okay to go on with the questions?"]

16) Were you working for pay 12 months ago, that is, last April (May)?

- Yes ► (If "No" in question 11, skip to question 20; otherwise go to question 17)
- No ► (skip to question 20a)
- Don't know ► (skip to question 20a)
- Refused ► (skip to question 20a)

17) Do you earn more, less, or about the same as you did last April (May)?

- More
- Less

- The same
- Don't know
- Refused

18) Is your hourly pay more, less, or about the same as it was last April (May)?

- More
- Less
- The same
- Don't know
- Refused

19) Is the number of hours per week that you work more, less, or about the same as it was last April (May)?

- More
- Less
- The same
- Don't know
- Refused

20) I'm now going to read you a list of things about getting and keeping a job. For each one I read, say if it is a big problem, a small problem, not a problem at all, or if it helped you when you were trying to find a job or when you are working.

Problem	Big problem	Small problem	Not a problem	Helped when finding job	Don't Know	Refused	N/A
a) Your education	1	2	3	4	7	9	
b) Transportation to and from work	1	2	3	4	7	9	
c) Finding a job in your community	1	2	3	4	7	9	
d) Discrimination by employers	1	2	3	4	7	9	
e) Community attitudes towards disabilities	1	2	3	4	7	9	
f) Finding childcare that doesn't cost too much.	1	2	3	4	7	9	8
g) Need for personal assistance on the job	1	2	3	4	7	9	8
h) Need for special equipment or assistive technology on the job	1	2	3	4	7	9	8
i) Is there anything else that's a problem when finding or keeping a job?							
<input type="checkbox"/> Yes [SPECIFY]							
<input type="checkbox"/> No							
<input type="checkbox"/> Don't Know							
<input type="checkbox"/> Refused							

Health Questions

21) Would you say that your health is...

- Excellent
- Good
- Fair
- Poor
- Very Poor
- Don't know
- Refused

22) Do you have a disability?

- Yes
- No ► *(skip to question 26)*
- Don't know ► *(skip to question 26)*
- Refused ► *(skip to question 26)*

23) What is your disability? **[SPECIFY]**

(If more than one, ask which one is considered to be primary. If there is any confusion about the wording, substitute "main" for "primary.")

24) In addition to your disability, do you have any other medical problems, impairments or disabilities?

- Yes
- No ► *(skip to question 26)*
- Don't know ► *(skip to question 26)*
- Refused ► *(skip to question 26)*

25) What other medical problems, impairments or disabilities do you have? **[SPECIFY]**

Background Questions

26) Do you currently ...

- Live at someone else's home or apartment,
- Live in an apartment that provides services,
- Live in a group home,
- Live in a health care facility, institution, hospital or nursing home,
- Rent** a home or apartment,
- Own a home or apartment or,
- Not have a permanent home?
- Other **[SPECIFY]**

27) Are you currently married?

- Yes
- No ► *(skip to question 30a)*
- Don't know ► *(skip to question 30a)*
- Refused ► *(skip to question 30a)*

28) Does your spouse work in a job for pay?

- Yes
- No ► *(skip to question 30a)*
- Don't know ► *(skip to question 30a)*
- Refused ► *(skip to question 30a)*

29) Are you worried that your spouse's earnings may make you lose your Medicaid benefits?

- Yes
- No
- Don't know
- Refused

[IF Q11>1, SKIP TO Q30d]

30a) What is your current job? **[SPECIFY]**

(Remind respondent that responses are confidential if they seem to hesitate.)

30b) Do you work for yourself or an employer?

- Work for self
- Work for an employer
- Both
- Don't know
- Refused

30c) *(If multiple jobs in 32a)* Which of your jobs is your main job? **[SPECIFY]**

[SKIP to 31a]

30d) What kind of job are you looking for? **[SPECIFY]**

(Remind respondent that responses are confidential if they seem to hesitate.)

30e) Would that be working for yourself, or an employer?

- Working for self
- Working for employer
- Both
- Don't know
- Refused

Closing

31a) Do you have anything that you like about the MEPD program?

- Yes **[SPECIFY]**

- No
- Don't Know
- Refused

31b) Do you have anything you dislike about the MEPD program?

- Yes [**SPECIFY**]
- No
- Don't Know
- Refused

32a) We appreciate your help in this study. When we have completed all interviews, the results will be made into a report. This will be a public report from DHS. Would you like to get a copy of the report summary?

- Yes
- No ► (*skip to **Good Bye***)

32b) [**INTERVIEWER: VERIFY ADDRESS**]

NAME

ADDRESS

TOWN

STATE

ZIP

PHONE

GOOD BYE

That completes the interview. I want to thank you very much for your time and help. Good-bye.

Appendix B

Responses to Survey Questions

Table B.1: (Question 1) Have you heard of MEPD, sometimes called Medicaid for Employed People with Disabilities, "mep-ED", or the Medicaid Buy-in?

	2004	2005	2007	2008	2009	2010
Yes	81.3%	84.6%	81.0%	83.7%	83.8%	86.5%
No	18.7%	15.4%	19.0%	16.3%	16.2%	13.5%
N	668	691	420	406	452	513
DK/Refused	8	3	4	5	3	6
No Response	0	0	0	0	0	0

Table B.2: (Question 2) How did you learn about MEPD?

	2004	2005	2007	2008	2009	2010
DHS worker	59.6%	59.9%	47.5%	55.2%	51.3%	31.4%
Other DHS Staff	---	---	---	8.0%	5.9%	6.7%
Family member	4.5%	6.3%	6.0%	4.3%	2.4%	6.7%
Friend	6.8%	8.0%	5.4%	4.9%	5.9%	4.3%
Benefit planner	0.0%	0.3%	1.3%	0.9%	0.0%	---
Medical Professional	---	---	---	8.6%	8.6%	3.4%
Job coach	1.1%	0.4%	0.9%	0.3%	0.3%	---
Brochure	1.4%	2.0%	1.9%	5.2%	5.3%	4.8%
Case manager	1.3%	3.6%	17.7%	6.5%	5.3%	17.3%
Community Workshop/Training	---	---	---	2.5%	0.9%	---
CIL	0.3%	0.3%	0.0%	---	---	---
Social Worker	---	---	---	---	---	9.6%
Social Security Office	---	---	---	---	---	9.1%
Provider/Other Agency	---	---	---	---	---	3.1%
Other	25.0%	19.2%	19.3%	3.4%	14.2%	3.6%
N	516	563	318	324	339	417
DK/Refused	27	22	22	16	39	27
No Response	133	109	84	71	77	75

Table B.3: (Question 3a) "Applying for MEPD was easy."

	2004	2005	2007	2008	2009	2010
Strongly Agree	21.6%	18.7%	19.6%	22.4%	22.7%	26.0%
Agree	64.4%	66.2%	60.9%	57.8%	60.8%	54.9%
Neutral	3.2%	4.2%	9.9%	9.9%	8.5%	12.6%
Disagree	9.1%	8.2%	5.9%	9.0%	6.8%	5.6%
Strongly Disagree	1.7%	2.7%	3.7%	0.9%	1.1%	0.9%
N	535	574	322	322	352	430
DK/Refused	8	11	18	18	27	14
No Response	133	109	84	71	76	75

Table B.4: (Question 3b) "The rules for getting MEPD were explained clearly to me."

	2004	2005	2007	2008	2009	2010
Strongly Agree	17.7%	18.9%	20.7%	17.7%	19.7%	21.3%
Agree	67.7%	62.7%	62.9%	66.1%	62.0%	62.0%
Neutral	2.7%	3.6%	7.0%	7.6%	8.9%	7.4%
Disagree	9.7%	12.3%	6.7%	7.6%	8.3%	7.6%
Strongly Disagree	2.3%	2.5%	2.7%	0.9%	1.1%	1.6%
N	527	574	329	327	361	432
DK/Refused	16	11	11	13	18	12
No Response	133	109	84	71	76	75

Table B.5: (Question 3c) "The DHS worker was helpful."

	2004	2005	2007	2008	2009	2010
Strongly Agree	17.7%	36.1%	35.0%	35.8%	35.7%	37.2%
Agree	67.7%	51.0%	56.8%	55.7%	54.0%	50.2%
Neutral	2.7%	3.1%	3.0%	3.0%	5.3%	8.0%
Disagree	9.7%	5.8%	3.3%	4.2%	3.9%	3.9%
Strongly Disagree	2.3%	3.9%	1.8%	1.2%	1.1%	2.3%
N	536	584	331	332	361	436
DK/Refused	7	1	9	8	18	8
No Response	133	109	84	71	76	75

Table B.6: (Question 3d) "I understand how much money I can save and stay on MEPD."

	2004	2005	2007	2008	2009	2010
Strongly Agree	27.1%	24.3%	14.8%	12.6%	14.2%	17.9%
Agree	55.9%	53.0%	45.5%	45.7%	45.4%	41.8%
Neutral	3.5%	5.2%	11.0%	8.8%	8.1%	11.5%
Disagree	10.8%	14.0%	21.3%	29.0%	27.6%	23.9%
Strongly Disagree	2.6%	3.5%	7.4%	3.8%	4.7%	4.8%
N	525	569	310	317	359	435
DK/Refused	18	16	30	23	20	9
No Response	133	109	84	71	76	75

Table B.7: (Question 3e) "I understand how much money I can earn and stay on MEPD."

	2004	2005	2007	2008	2009	2010
Strongly Agree	27.1%	15.7%	12.3%	9.1%	10.7%	14.3%
Agree	55.9%	49.5%	51.5%	48.3%	46.5%	50.4%
Neutral	3.5%	3.8%	8.7%	7.6%	10.7%	9.1%
Disagree	10.8%	25.7%	20.4%	48.3%	28.7%	21.5%
Strongly Disagree	2.6%	5.1%	7.1%	9.1%	3.4%	4.7%
N	511	558	309	317	355	427
DK/Refused	32	27	31	23	24	17
No Response	133	109	84	71	76	75

Table B.8: (Question 3f) "Applying for MEPD was quick."

	2004	2005	2007	2008	2009	2010
Strongly Agree	19.6%	18.8%	17.1%	12.9%	16.6%	20.8%
Agree	63.6%	66.5%	63.0%	66.6%	64.2%	60.2%
Neutral	4.0%	4.6%	8.1%	9.2%	8.7%	11.7%
Disagree	10.4%	7.7%	9.3%	10.4%	9.3%	5.6%
Strongly Disagree	2.4%	2.5%	2.5%	0.9%	1.1%	1.6%
N	527	574	322	326	355	247
DK/Refused	16	11	18	14	24	17
No Response	133	109	84	71	76	75

Table B.9: (Question 3g) "I'm satisfied with how I applied for the MEPD program."

	2004	2005	2007	2008	2009	2010
Strongly Agree	29.3%	27.4%	19.5%	18.3%	20.0%	23.3%
Agree	61.6%	63.6%	68.4%	72.6%	71.8%	67.7%
Neutral	1.6%	2.8%	7.9%	4.0%	4.1%	4.6%
Disagree	5.0%	4.5%	2.7%	4.6%	3.3%	3.2%
Strongly Disagree	2.5%	1.8%	1.5%	0.6%	0.8%	1.2%
N	538	578	329	328	365	434
DK/Refused	5	7	11	12	14	10
No Response	133	109	84	71	76	75

Table B.10: (Question 4) Do you have anything else to say about applying for the MEPD program?

	2004	2005	2007	2008	2009	2010
Yes	27.2%	30.2%	16.3%	9.7%	4.8%	0.7%
No	72.8%	69.8%	83.7%	90.3%	95.2%	99.3%
N	542	584	338	340	378	443
DK/Refused	1	1	2	0	0	0
No Response	133	109	84	71	77	75

Table B.11: (Question 5a) "The MEPD program lets me work and stay on Medicaid."

	2004	2005	2007	2008	2009	2010
Strongly Agree	28.8%	26.3%	35.8%	31.8%	30.3%	35.6%
Agree	65.8%	68.5%	58.1%	62.5%	63.0%	58.7%
Neutral	1.4%	2.9%	3.3%	4.2%	5.1%	5.0%
Disagree	3.1%	1.9%	0.9%	1.5%	1.1%	0.5%
Strongly Disagree	0.9%	0.3%	1.8%	0.0%	0.5%	0.2%
N	531	578	332	333	370	438
DK/Refused	12	7	8	7	9	6
No Response	133	109	84	71	76	75

Table B.12: (Question 5b) *“The MEPD program lets me have more money saved than other Medicaid programs.”*

	2004	2005	2007	2008	2009	2010
Strongly Agree	20.5%	19.4%	19.4%	12.6%	16.2%	19.3%
Agree	59.0%	57.0%	43.7%	44.4%	44.7%	36.3%
Neutral	8.7%	12.0%	30.2%	31.9%	31.5%	34.5%
Disagree	11.0%	8.9%	6.3%	10.0%	7.0%	7.4%
Strongly Disagree	0.7%	2.7%	0.4%	1.1%	0.7%	2.5%
N	406	474	252	270	302	394
DK/Refused	137	111	88	70	77	50
No Response	133	109	84	71	76	75

Table B.13: (Question 5c) *“If I could, I would work more.”*

	2004	2005	2007	2008	2009	2010
Strongly Agree	20.8%	21.5%	19.0%	24.1%	19.9%	25.2%
Agree	55.3%	53.0%	46.7%	50.9%	52.0%	44.7%
Neutral	4.6%	5.8%	11.6%	11.3%	10.0%	14.1%
Disagree	16.1%	17.1%	18.5%	12.2%	17.0%	13.6%
Strongly Disagree	3.2%	2.5%	4.2%	1.5%	1.1%	2.5%
N	530	576	336	336	371	441
DK/Refused	12	8	4	4	8	3
No Response	133	109	84	71	76	75

Table B.14: (Question 5d) *“I just want to work the minimum amount to keep my Medicaid.”*

	2004	2005	2007	2008	2009	2010
Strongly Agree	5.3%	7.3%	4.8%	4.3%	3.5%	6.4%
Agree	34.9%	35.7%	37.9%	30.8%	33.3%	31.2%
Neutral	6.4%	7.0%	13.6%	15.4%	13.0%	16.3%
Disagree	40.0%	37.6%	31.2%	38.8%	37.7%	33.5%
Strongly Disagree	13.4%	12.4%	12.4%	10.8%	12.5%	12.6%
N	527	558	330	325	369	436
DK/Refused	16	27	10	15	10	8
No Response	133	109	84	71	76	75

Table B.15: (Question 5e) *"I would recommend the MEPD program to people with disabilities."*

	2004	2005	2007	2008	2009	2010
Strongly Agree	41.4%	45.1%	42.2%	39.1%	40.7%	44.9%
Agree	55.3%	52.0%	52.5%	56.2%	56.1%	50.8%
Neutral	1.7%	1.1%	3.2%	3.6%	1.9%	2.9%
Disagree	0.8%	1.8%	0.9%	0.6%	1.3%	0.9%
Strongly Disagree	0.7%	0.0%	1.2%	0.6%	0.0%	0.5%
N	539	583	339	338	376	441
DK/Refused	4	2	1	2	3	3
No Response	133	109	84	71	76	75

Table B.16: (Question 6) *Before you enrolled in MEPD, were you worried that you could lose your Medicaid if you worked or got a job?*

	2004	2005	2007	2008	2009	2010
Not at all worried	21.2%	22.4%	27.2%	34.2%	23.7%	28.2%
A little worried	8.4%	11.7%	17.3%	18.5%	26.9%	22.5%
Worried	12.2%	14.2%	18.9%	15.7%	18.0%	16.7%
Quite worried	14.2%	16.0%	13.3%	---	---	---
Very worried	44.1%	35.6%	23.3%	31.7%	31.4%	32.5%
N	511	559	301	319	350	418
DK/Refused	32	26	39	21	29	26
No Response	133	109	84	71	76	75

Table B.17: (Question 7a) *Now that you have MEPD for medical assistance, how worried are you that you might lose your Medicaid because you work?*

	2004	2005	2007	2008	2009	2010
Not at all worried	28.6%	35.4%	56.4%	58.1%	53.8%	51.9%
A little worried	25.6%	25.7%	19.6%	25.7%	29.0%	27.9%
Worried	16.5%	13.7%	10.1%	8.6%	9.0%	9.8%
Quite worried	7.9%	7.9%	5.8%	---	---	---
Very worried	21.3%	17.3%	8.0%	7.6%	8.2%	10.5%
N	533	577	326	327	366	430
DK/Refused	10	8	14	13	13	14
No Response	133	109	84	71	76	75

Table B.18: (Question 7b) Now that you have MEPD, how worried are you that you could lose your monthly Social Security check because you work?

	2004	2005	2007	2008	2009	2010
Not at all worried	--	42.8%	60.1%	65.7%	58.2%	59.4%
A little worried	--	17.0%	19.3%	15.5%	22.1%	20.0%
Worried	--	13.5%	6.5%	7.6%	7.9%	7.0%
Quite worried	--	7.1%	4.0%	---	---	---
Very worried	--	19.5%	10.0%	11.2%	11.7%	13.7%
N	--	578	321	329	366	431
DK/Refused	--	7	19	11	13	13
No Response	--	109	84	71	76	75

Table B.19: (Question 8) Have you had any problems with the MEPD program?

	2004	2005	2007	2008	2009	2010
Yes	13.1%	9.6%	10.9%	8.8%	8.3%	5.2%
No	86.9%	90.4%	89.1%	91.2%	91.7%	94.8%
N	543	585	340	339	375	444
DK/Refused	0	0	0	1	4	0
No Response	133	109	84	71	76	75

Table B.20: (Question 9) What sorts of problems have you had?

	2004	2005	2007	2008	2009	2010
Program wasn't explain clearly	8.2%	15.6%	27.0%	26.7%	19.4%	18.5%
Availability of jobs	10.2%	1.8%	2.7%	10.0%	0.0%	0.0%
Trouble keeping a job	0.0%	2.6%	0.0%	3.3%	0.0%	11.1%
Too much paperwork	8.8%	15.6%	2.7%	6.7%	3.2%	7.4%
Resource limits are too low	1.4%	3.5%	2.7%	20.0%	6.5%	14.8%
Problems with case manager or social worker	0.0%	2.6%	5.4%	13.3%	3.2%	3.7%
Problems with DHS worker	8.8%	15.6%	18.9%	10.0%	9.7%	11.1%
Can't find doctor or provider who takes Medicaid	2.7%	3.5%	10.8%	3.3%	0.0%	7.4%
Other	83.0%	64.4%	59.5%	43.3%	71.0%	25.9%
N	71	56	37	30	31	27
DK/Refused	0	0	0	0	0	0
No Response	605	638	387	381	424	492

Table B.21: (Question 10a) How happy are you with the MEPD program?

	2004	2005	2007	2008	2009	2010
Very Happy	58.6%	55.8%	43.2%	42.1%	45.5%	43.0%
Happy	33.4%	38.3%	40.5%	44.5%	43.6%	41.9%
Neutral	4.9%	2.8%	12.4%	11.0%	9.3%	12.7%
Unhappy	1.9%	2.1%	2.1%	1.2%	1.6%	1.8%
Very Unhappy	1.2%	1.0%	1.8%	1.2%	0.0%	0.7%
N	542	583	338	337	376	442
DK/Refused	1	2	2	3	3	2
No Response	133	109	84	71	76	75

Table B.22: (Question 10b) How would you get medical care if you didn't have this program?

	2004	2005	2007	2008	2009	2010
Other insurance	--	--	13.4%	8.9%	6.1%	9.1%
Free clinic	--	--	9.0%	6.4%	7.2%	6.1%
Borrow money	--	--	3.2%	1.4%	--	--
Go without	--	--	61.4%	51.6%	53.6%	41.7%
Medicare	--	--	--	25.2%	26.6%	25.4%
Iowa Care	--	--	--	--	0.8%	4.5%
Veterans Administration	--	--	--	--	1.9%	1.6%
Pay out of pocket	--	--	--	--	--	9.9%
Other	--	--	13.0%	6.4%	3.8%	1.6%
N	--	--	277	281	263	374
DK/Refused	--	--	63	59	116	70
No Response	--	--	84	71	76	75

Table B.23: (Question 11) Do you currently do any work for pay?

	2004	2005	2007	2008	2009	2010
Yes	83.3%	88.0%	84.4%	82.7%	83.5%	83.8%
No	16.7%	12.0%	15.6%	17.3%	16.5%	16.2%
N	676	694	423	411	455	518
DK/Refused	0	0	1	0	0	1
No Response	0	0	0	0	0	0

Table B.24: (Question 12b) *I will give you choices about the number of hours you work. Please let me know when I say the number of hours that you work each week.*

	2004	2005	2007	2008	2009	2010
Less than 2 hours	21.0%	28.0%	27.5%	59.1%	44.6%	46.3%
2-5	--	--	--	18.2%	21.6%	24.4%
6-10	--	--	--	9.1%	14.9%	9.8%
11-20	20.0%	20.9%	21.4%	4.5%	12.2%	4.9%
21-30	8.6%	8.2%	6.1%	0.0%	5.4%	7.3%
31-40	3.9%	2.3%	2.0%	9.1%	1.4%	2.4%
More than 40 hours	1.2%	1.1%	0.3%	0.0%	0.0%	4.9%
N	561	607	346	22	74	41
DK/Refused	2	2	11	7	2	3
No Response	113	85	67	382	379	475

Table B.25: (Question 13a) *Do you want to increase, decrease, or keep the same number of hours you work now?*

	2004	2005	2007	2008	2009	2010
Increase	34.4%	31.1%	28.3%	33.8%	27.7%	33.2%
Decrease	3.7%	3.2%	3.7%	3.0%	4.3%	3.3%
Keep the same	62.0%	65.7%	68.0%	63.1%	68.0%	63.6%
N	543	596	350	331	372	428
DK/Refused	20	15	7	9	8	6
No Response	113	83	67	71	75	85

Table B.26: (Question 13b) *Do you want to be working over the next twelve months?*

	2004	2005	2007	2008	2009	2010
Yes	66.8%	57.7%	62.5%	63.6%	69.4%	63.3%
No	33.2%	42.3%	37.5%	36.4%	30.6%	36.7%
N	107	80	64	66	72	79
DK/Refused	6	3	3	5	3	6
No Response	563	611	357	340	380	434

Table B.27: (Question 14a-a) "I want to work more because I like my job."

	2004	2005	2007	2008	2009	2010
Strongly Agree	34.7%	33.5%	28.9%	22.7%	18.8%	27.0%
Agree	58.0%	56.6%	42.3%	52.7%	47.5%	49.6%
Neutral	1.8%	2.6%	17.5%	15.5%	17.8%	17.7%
Disagree	4.2%	5.8%	9.3%	9.1%	12.9%	5.7%
Strongly Disagree	1.3%	1.6%	2.1%	0.0%	3.0%	0.0%
N	186	185	97	110	101	141
DK/Refused	0	0	2	2	2	1
No Response	490	509	325	299	353	377

Table B.28: (Question 14a-b) "I want to work more so that I can earn more money."

	2004	2005	2007	2008	2009	2010
Strongly Agree	38.3%	41.1%	49.0%	38.4%	32.0%	35.7%
Agree	55.2%	54.7%	45.9%	55.4%	62.1%	55.7%
Neutral	1.6%	1.9%	3.1%	5.4%	4.9%	7.1%
Disagree	4.9%	2.1%	2.0%	0.9%	1.0%	1.4%
Strongly Disagree	0.0%	0.3%	0.0%	0.0%	0.0%	0.0%
N	186	185	98	112	103	140
DK/Refused	0	0	1	0	0	2
No Response	490	509	325	299	352	377

Table B.29: (Question 14a-c) "I feel good about working."

	2004	2005	2007	2008	2009	2010
Strongly Agree	40.5%	44.2%	39.4%	41.1%	39.6%	36.6%
Agree	56.4%	53.4%	53.5%	54.5%	58.4%	57.0%
Neutral	2.3%	1.1%	3.0%	3.6%	1.0%	4.2%
Disagree	0.8%	1.3%	4.0%	0.9%	1.0%	2.1%
Strongly Disagree	0.0%	0.0%	0.0%	0.0%	0.0%	0.0%
N	186	185	99	112	101	142
DK/Refused	0	0	0	0	2	0
No Response	490	509	325	299	352	377

Table B.30: (Question 14a-d) "I feel useful when I'm working."

	2004	2005	2007	2008	2009	2010
Strongly Agree	51.3%	48.2%	51.0%	44.6%	46.6%	43.0%
Agree	44.8%	48.9%	41.8%	50.9%	53.4%	52.8%
Neutral	2.3%	0.5%	2.0%	1.8%	0.0%	3.5%
Disagree	1.6%	2.1%	4.1%	1.8%	0.0%	0.7%
Strongly Disagree	0.0%	0.3%	1.0%	0.9%	0.0%	0.0%
N	186	185	98	112	103	142
DK/Refused	0	0	1	0	0	0
No Response	490	509	325	299	352	377

Table B.31: (Question 14a-e) "I'm getting work skills that will let me get better jobs."

	2004	2005	2007	2008	2009	2010
Strongly Agree	17.1%	9.0%	16.7%	9.8%	8.1%	10.6%
Agree	33.9%	31.4%	30.2%	26.8%	26.3%	27.0%
Neutral	13.2%	11.4%	19.8%	27.7%	27.3%	27.7%
Disagree	32.1%	43.3%	32.3%	30.4%	35.4%	32.6%
Strongly Disagree	3.7%	4.9%	1.0%	5.4%	3.0%	2.1%
N	184	180	96	112	99	141
DK/Refused	2	5	3	0	4	1
No Response	490	509	325	299	352	377

Table B.32: (Question 14a-f) "I am building up my ability to work longer hours."

	2004	2005	2007	2008	2009	2010
Strongly Agree	19.0%	13.6%	20.8%	17.1%	10.1%	8.5%
Agree	52.8%	51.3%	37.5%	37.8%	47.5%	40.4%
Neutral	10.6%	6.0%	19.8%	16.2%	19.2%	20.6%
Disagree	16.9%	25.9%	20.8%	26.1%	22.2%	30.5%
Strongly Disagree	0.8%	3.2%	1.0%	2.7%	1.0%	0.0%
N	184	180	96	111	99	141
DK/Refused	2	5	3	1	4	1
No Response	490	509	325	299	352	377

Table B.33: (Question 14a-g) "I get more benefits, like insurance or retirement, when I work more."

	2004	2005	2007	2008	2009	2010
Strongly Agree	10.3%	6.6%	9.7%	8.7%	4.3%	5.1%
Agree	32.4%	24.1%	24.7%	25.2%	20.2%	22.5%
Neutral	7.3%	7.4%	10.8%	7.8%	18.1%	14.5%
Disagree	40.0%	52.8%	39.8%	47.6%	48.9%	47.8%
Strongly Disagree	10.0%	9.0%	15.1%	10.7%	8.5%	10.1%
N	179	178	93	103	94	138
DK/Refused	7	7	6	9	9	4
No Response	490	509	325	299	352	377

Table B.34: (Question 14a-h) Any other reason?

	2004	2005	2007	2008	2009	2010
Yes	61.2%	60.8%	38.1%	25.0%	14.6%	4.2%
No	38.8%	39.2%	61.9%	75.0%	85.4%	95.8%
N	184	185	97	112	103	142
DK/Refused	2	0	2	0	0	0
No Response	490	509	325	299	352	377

Table B.35: (Question 14b-a) "I would like having a job."

	2004	2005	2007	2008	2009	2010
Strongly Agree	29.3%	28.5%	35.0%	23.8%	22.0%	30.6%
Agree	68.7%	69.4%	55.0%	73.8%	70.0%	61.2%
Neutral	2.0%	1.0%	7.5%	0.0%	6.0%	6.1%
Disagree	0.0%	1.0%	2.5%	2.4%	2.0%	20.0%
Strongly Disagree	0.0%	0.0%	0.0%	0.0%	0.0%	0.0%
N	71	46	40	42	50	49
DK/Refused	0	0	0	0	0	1
No Response	605	648	384	369	405	469

Table B.36: (Question 14b-b) "I want to work so that I can earn money."

	2004	2005	2007	2008	2009	2010
Strongly Agree	33.6%	28.5%	38.5%	23.8%	22.0%	34.0%
Agree	64.4%	69.4%	53.8%	76.2%	70.0%	60.0%
Neutral	2.1%	0.0%	5.1%	0.0%	6.0%	6.0%
Disagree	0.0%	2.1%	2.6%	0.0%	2.0%	0.0%
Strongly Disagree	0.0%	0.0%	0.0%	0.0%	0.0%	0.0%
N	71	46	39	42	50	50
DK/Refused	0	0	1	0	0	0
No Response	605	648	384	369	405	469

Table B.37: (Question 14b-c) "I would feel good about working."

	2004	2005	2007	2008	2009	2010
Strongly Agree	30.6%	29.5%	37.5%	28.6%	32.0%	38.0%
Agree	66.7%	64.2%	55.0%	71.4%	58.0%	54.0%
Neutral	0.0%	0.0%	5.0%	0.0%	8.0%	8.0%
Disagree	2.8%	6.3%	2.5%	0.0%	2.0%	0.0%
Strongly Disagree	0.0%	0.0%	0.0%	0.0%	0.0%	0.0%
N	70	46	40	42	50	50
DK/Refused	1	0	0	0	0	0
No Response	605	648	384	369	405	469

Table B.38: (Question 14b-d) "I would feel useful when working."

	2004	2005	2007	2008	2009	2010
Strongly Agree	36.1%	35.2%	41.0%	28.6%	28.6%	40.0%
Agree	59.9%	56.3%	51.3%	66.7%	59.2%	52.0%
Neutral	0.0%	2.2%	5.1%	2.4%	6.1%	8.0%
Disagree	4.1%	6.3%	2.6%	2.4%	6.1%	0.0%
Strongly Disagree	0.0%	0.0%	0.0%	0.0%	0.0%	0.0%
N	71	46	39	42	49	50
DK/Refused	0	0	1	0	1	0
No Response	605	648	384	369	405	469

Table B.39: (Question 14b-e) "I would get work skills that would let me get better jobs."

	2004	2005	2007	2008	2009	2010
Strongly Agree	20.8%	24.8%	18.9%	17.1%	16.3%	24.5%
Agree	68.8%	61.7%	54.1%	56.1%	67.3%	51.0%
Neutral	0.7%	3.4%	16.2%	4.9%	10.2%	14.3%
Disagree	7.6%	10.0%	8.1%	19.5%	6.1%	10.2%
Strongly Disagree	2.1%	0.0%	2.7%	2.4%	0.0%	0.0%
N	70	43	37	41	49	49
DK/Refused	1	3	3	1	1	1
No Response	605	648	384	369	405	469

Table B.40: (Question 14b-f) "I would be able to build up my ability to work longer hours."

	2004	2005	2007	2008	2009	2010
Strongly Agree	19.6%	16.3%	10.5%	9.5%	8.2%	12.2%
Agree	68.1%	64.0%	47.4%	42.9%	44.9%	49.0%
Neutral	0.0%	7.7%	18.4%	16.7%	18.4%	18.4%
Disagree	7.2%	12.0%	15.8%	31.0%	26.5%	18.4%
Strongly Disagree	5.1%	0.0%	7.9%	0.0%	2.0%	2.0%
N	67	45	38	42	49	49
DK/Refused	4	1	2	0	1	1
No Response	605	648	384	369	405	469

Table B.41: (Question 14b-g) "I would get more benefits, like insurance or retirement if I worked."

	2004	2005	2007	2008	2009	2010
Strongly Agree	15.3%	18.2%	26.3%	15.4%	6.4%	15.2%
Agree	54.1%	45.4%	42.1%	51.3%	51.1%	54.3%
Neutral	5.8%	6.8%	15.8%	12.8%	8.5%	15.2%
Disagree	21.2%	29.5%	13.2%	17.9%	31.9%	13.0%
Strongly Disagree	3.6%	0.0%	2.6%	2.6%	2.1%	2.2%
N	67	43	38	39	47	46
DK/Refused	4	3	2	3	3	4
No Response	605	648	384	369	405	469

Table B.42: (Question 14b-h) Any other reason?

	2004	2005	2007	2008	2009	2010
Yes	58.5%	50.6%	32.5%	31.0%	8.0%	0.0%
No	41.5%	49.4%	67.5%	69.0%	92.0%	100.0%
N	71	46	40	42	50	50
DK/Refused	0	0	0	0	0	0
No Response	605	648	384	369	405	469

Table B.43: (Question 15a-a) "I am worried about losing Medicaid."

	2004	2005	2007	2008	2009	2010
Strongly Agree	21.2%	22.2%	13.0%	15.0%	11.0%	14.2%
Agree	41.9%	37.9%	31.6%	28.6%	26.2%	32.7%
Neutral	2.4%	4.9%	9.3%	14.1%	16.3%	12.1%
Disagree	25.9%	29.2%	39.7%	33.3%	36.5%	31.3%
Strongly Disagree	8.6%	5.7%	6.5%	8.9%	9.9%	9.6%
N	350	408	247	213	263	281
DK/Refused	6	3	4	6	6	5
No Response	320	283	173	192	186	233

Table B.44: (Question 15a-b) "I am worried about losing my Social Security or SSDI monthly check."

	2004	2005	2007	2008	2009	2010
Strongly Agree	22.4%	23.9%	9.5%	13.8%	11.7%	18.5%
Agree	29.9%	31.6%	28.2%	28.1%	23.8%	25.4%
Neutral	3.2%	4.1%	10.4%	10.5%	9.0%	11.2%
Disagree	34.9%	33.3%	42.3%	36.2%	47.3%	37.0%
Strongly Disagree	9.7%	7.2%	9.5%	11.4%	8.2%	8.0%
N	350	406	241	210	256	276
DK/Refused/NA	6	5	10	9	13	10
No Response	320	283	173	192	186	233

Table B.45: (Question 15a-c) "I am worried about losing food assistance."

	2004	2005	2007	2008	2009	2010
Strongly Agree	9.1%	9.4%	7.0%	11.2%	11.4%	11.8%
Agree	11.3%	14.7%	14.0%	19.1%	18.7%	22.2%
Neutral	12.2%	14.3%	27.3%	11.2%	12.2%	13.2%
Disagree	49.4%	35.1%	40.1%	51.7%	47.2%	42.4%
Strongly Disagree	17.9%	26.5%	11.6%	6.7%	10.6%	10.4%
N	325	381	172	89	123	144
DK/Refused/NA	31	30	79	130	146	142
No Response	320	283	173	192	186	233

Table B.46: (Question 15a-d) "I am worried about losing other help like rent subsidy or utility help."

	2004	2005	2007	2008	2009	2010
Strongly Agree	12.4%	14.0%	5.9%	10.9%	8.7%	12.4%
Agree	23.3%	21.5%	19.7%	26.1%	26.0%	27.7%
Neutral	7.9%	10.5%	22.2%	8.4%	12.7%	10.2%
Disagree	41.5%	33.8%	44.8%	47.9%	44.0%	39.5%
Strongly Disagree	14.8%	20.3%	7.4%	6.7%	8.7%	10.2%
N	337	394	203	119	150	177
DK/Refused/NA	19	17	48	100	119	109
No Response	320	283	173	192	186	233

Table B.47: (Question 15a-e) "Working is stressful."

	2004	2005	2007	2008	2009	2010
Strongly Agree	19.9%	17.8%	18.1%	18.3%	19.1%	18.1%
Agree	43.2%	41.3%	37.8%	37.6%	33.3%	38.3%
Neutral	3.5%	7.2%	13.3%	10.6%	8.6%	9.2%
Disagree	28.6%	28.6%	25.7%	29.4%	34.8%	29.4%
Strongly Disagree	4.9%	5.1%	5.2%	4.1%	4.1%	5.0%
N	349	411	249	218	267	282
DK/Refused	7	0	2	1	2	4
No Response	320	283	173	192	186	233

Table B.48: (Question 15a-f) "I don't like my job."

	2004	2005	2007	2008	2009	2010
Strongly Agree	2.1%	1.0%	4.9%	0.0%	1.9%	2.1%
Agree	8.4%	7.6%	9.4%	7.9%	7.6%	5.3%
Neutral	5.5%	8.7%	13.5%	12.0%	8.4%	14.2%
Disagree	67.5%	59.6%	53.9%	62.0%	64.5%	59.2%
Strongly Disagree	16.5%	23.1%	18.4%	18.1%	17.6%	19.1%
N	353	410	245	216	262	282
DK/Refused	3	1	6	3	7	4
No Response	320	283	173	192	186	233

Table B.49: (Question 15a-g) "My health has gotten worse for reasons not caused by working."

	2004	2005	2007	2008	2009	2010
Strongly Agree	16.7%	20.1%	16.9%	16.7%	21.9%	18.1%
Agree	44.9%	38.6%	44.4%	42.8%	37.7%	41.9%
Neutral	5.8%	4.9%	13.2%	7.0%	9.6%	10.5%
Disagree	27.5%	30.9%	20.2%	29.3%	28.1%	25.3%
Strongly Disagree	5.1%	5.4%	5.3%	4.2%	2.7%	4.3%
N	352	406	243	215	260	277
DK/Refused	4	5	8	4	9	9
No Response	320	283	173	192	186	233

Table B.50: (Question 15a-h) "Not physically able to work more"

	2004	2005	2007	2008	2009	2010
Strongly Agree	25.2%	31.7%	27.3%	26.0%	24.7%	25.8%
Agree	51.7%	46.7%	52.7%	53.0%	53.6%	49.8%
Neutral	1.1%	4.2%	6.9%	3.3%	6.1%	8.2%
Disagree	19.6%	14.3%	10.2%	16.3%	13.7%	13.3%
Strongly Disagree	2.5%	3.1%	2.9%	1.4%	1.9%	2.9%
N	353	407	245	215	263	279
DK/Refused	3	4	6	4	6	7
No Response	320	283	173	192	186	233

Table B.51: (Question 15a-i) "I need more education or training."

	2004	2005	2007	2008	2009	2010
Strongly Agree	8.1%	8.8%	6.5%	4.7%	5.7%	7.4%
Agree	23.4%	20.4%	19.9%	24.2%	19.4%	15.2%
Neutral	3.8%	6.6%	15.0%	10.7%	13.7%	10.6%
Disagree	54.2%	53.7%	50.4%	52.6%	51.7%	53.5%
Strongly Disagree	10.6%	10.4%	8.1%	7.9%	9.5%	13.1%
N	349	407	246	215	263	282
DK/Refused	7	4	5	4	6	4
No Response	320	283	173	192	186	233

Table B.52: (Question 15a-j) "Working has caused my health to get worse."

	2004	2005	2007	2008	2009	2010
Strongly Agree	5.1%	4.7%	7.0%	3.7%	6.1%	5.5%
Agree	20.3%	18.5%	15.6%	18.9%	13.6%	19.3%
Neutral	6.1%	8.1%	12.3%	12.0%	12.9%	12.4%
Disagree	58.3%	58.4%	55.7%	57.1%	58.7%	51.6%
Strongly Disagree	10.2%	10.4%	9.4%	8.3%	8.7%	11.3%
N	352	405	244	217	264	275
DK/Refused	4	6	7	2	5	11
No Response	320	283	173	192	186	233

Table B.53: (Question 15a-k) Any other reason?

	2004	2005	2007	2008	2009	2010
Yes	37.0%	46.9%	16.0%	12.8%	8.3%	2.1%
No	63.0%	53.1%	84.0%	87.2%	91.7%	97.9%
N	354	408	250	218	266	284
DK/Refused	2	3	1	1	3	2
No Response	320	283	173	192	186	233

Table B.54: (Question 15b-a) "I am worried about losing Medicaid."

	2004	2005	2007	2008	2009	2010
Strongly Agree	17.1%	25.0%	11.1%	6.9%	4.2%	14.3%
Agree	43.4%	23.6%	25.9%	10.3%	41.7%	20.0%
Neutral	3.9%	0.0%	18.5%	17.2%	16.7%	28.6%
Disagree	18.4%	43.1%	33.3%	51.7%	37.5%	34.3%
Strongly Disagree	17.1%	8.3%	11.1%	13.8%	0.0%	2.9%
N	37	35	27	29	24	35
DK/Refused	5	2	0	0	1	0
No Response	634	657	397	382	430	484

Table B.55: (Question 15b-b) "I am worried about losing my Social Security or SSDI monthly check."

	2004	2005	2007	2008	2009	2010
Strongly Agree	30.6%	32.0%	11.1%	10.7%	0.0%	14.7%
Agree	31.8%	29.4%	29.6%	7.1%	48.0%	26.5%
Neutral	3.5%	4.0%	18.5%	7.1%	8.0%	17.6%
Disagree	27.1%	26.7%	33.3%	57.1%	32.0%	38.2%
Strongly Disagree	7.1%	8.0%	7.4%	17.9%	12.0%	2.9%
N	41	36	27	28	25	34
DK/Refused/NA	1	1	0	1	0	1
No Response	634	657	397	382	430	484

Table B.56: (Question 15b-c) "I am worried about losing food assistance."

	2004	2005	2007	2008	2009	2010
Strongly Agree	18.1%	8.5%	6.3%	11.8%	20.0%	4.5%
Agree	18.1%	31.4%	25.0%	17.6%	60.0%	36.4%
Neutral	7.2%	11.5%	12.5%	11.8%	0.0%	27.3%
Disagree	39.8%	42.8%	43.8%	47.1%	20.0%	31.8%
Strongly Disagree	16.9%	5.8%	12.5%	11.8%	0.0%	0.0%
N	41	34	16	17	10	22
DK/Refused/NA	1	3	11	12	15	13
No Response	634	657	397	382	430	484

Table B.57: (Question 15b-d) "I am worried about losing other help like rent subsidy or utility help."

	2004	2005	2007	2008	2009	2010
Strongly Agree	26.8%	9.7%	0.0%	14.3%	11.1%	9.1%
Agree	19.5%	34.3%	36.4%	14.3%	16.7%	36.4%
Neutral	7.3%	4.1%	13.6%	7.1%	16.7%	27.3%
Disagree	40.2%	46.5%	36.4%	57.1%	55.6%	27.3%
Strongly Disagree	6.1%	5.5%	13.6%	7.1%	0.0%	0.0%
N	40	36	22	14	18	22
DK/Refused/NA	2	1	5	15	7	13
No Response	634	657	397	382	430	484

Table B.58: (Question 15b-e) "Working is stressful."

	2004	2005	2007	2008	2009	2010
Strongly Agree	32.9%	33.3%	41.7%	25.0%	17.4%	20.6%
Agree	50.6%	40.6%	33.3%	33.3%	43.5%	50.0%
Neutral	3.5%	0.0%	0.0%	4.2%	8.7%	14.7%
Disagree	12.9%	20.3%	16.7%	29.2%	26.1%	14.7%
Strongly Disagree	0.0%	5.8%	8.3%	8.3%	4.3%	0.0%
N	41	34	24	24	23	34
DK/Refused	1	3	3	5	2	1
No Response	634	657	397	382	430	484

Table B.59: (Question 15b-f) "I didn't like jobs I have had before."

	2004	2005	2007	2008	2009	2010
Strongly Agree	10.6%	11.0%	3.7%	0.0%	0.0%	6.1%
Agree	15.3%	13.7%	11.1%	14.3%	12.0%	9.1%
Neutral	7.1%	0.0%	14.8%	17.9%	8.0%	6.1%
Disagree	58.8%	67.1%	48.1%	42.9%	68.0%	72.7%
Strongly Disagree	8.2%	8.2%	22.2%	25.0%	12.0%	6.1%
N	42	36	27	28	25	33
DK/Refused	0	1	0	1	0	2
No Response	634	657	397	382	430	484

Table B.60: (Question 15b-g) "My health has gotten worse for reasons not caused by working."

	2004	2005	2007	2008	2009	2010
Strongly Agree	36.0%	23.8%	33.3%	22.2%	20.0%	14.7%
Agree	40.7%	51.3%	51.9%	48.1%	56.0%	47.1%
Neutral	3.5%	3.9%	7.4%	3.7%	12.0%	17.6%
Disagree	19.8%	13.1%	3.7%	22.2%	12.0%	11.8%
Strongly Disagree	0.0%	7.9%	3.7%	3.7%	0.0%	8.8%
N	42	37	27	27	25	34
DK/Refused	0	0	0	2	0	1
No Response	634	657	397	382	430	484

Table B.61: (Question 15b-h) "Not physically able to work"

	2004	2005	2007	2008	2009	2010
Strongly Agree	43.9%	22.4%	40.7%	27.6%	24.0%	17.1%
Agree	45.1%	60.5%	48.1%	51.7%	64.0%	62.9%
Neutral	0.0%	0.0%	0.0%	10.3%	4.0%	5.7%
Disagree	7.3%	9.2%	11.1%	6.9%	8.0%	11.4%
Strongly Disagree	3.7%	7.9%	0.0%	3.4%	0.0%	2.9%
N	40	37	27	29	25	35
DK/Refused	2	0	0	0	0	0
No Response	634	657	397	382	430	484

Table B.62: (Question 15b-i) "I need more education or training."

	2004	2005	2007	2008	2009	2010
Strongly Agree	7.0%	8.6%	7.4%	10.3%	0.0%	5.7%
Agree	33.7%	22.8%	22.2%	3.4%	28.0%	25.7%
Neutral	3.5%	0.0%	7.4%	6.9%	4.0%	11.4%
Disagree	40.7%	67.1%	44.4%	62.1%	68.0%	51.4%
Strongly Disagree	15.1%	1.5%	18.5%	17.2%	0.0%	5.7%
N	42	34	27	29	25	35
DK/Refused	0	3	0	0	0	0
No Response	634	657	397	382	430	484

Table B.63: (Question 15b-j) "Working would cause my health to get worse."

	2004	2005	2007	2008	2009	2010
Strongly Agree	31.2%	14.5%	33.3%	6.9%	8.3%	23.5%
Agree	48.1%	65.8%	44.4%	55.2%	75.0%	47.1%
Neutral	0.0%	3.9%	14.8%	13.8%	8.3%	8.8%
Disagree	16.9%	11.8%	7.4%	17.2%	8.3%	20.6%
Strongly Disagree	3.9%	3.9%	0.0%	6.9%	0.0%	0.0%
N	38	37	27	29	24	34
DK/Refused	4	0	0	0	1	1
No Response	634	657	397	382	430	484

Table B.64: (Question 15b-k) Any other reason?

	2004	2005	2007	2008	2009	2010
Yes	34.9%	18.4%	26.9%	3.4%	4.0%	0.0%
No	65.1%	81.6%	73.1%	96.6%	96.0%	100.0%
N	42	37	26	29	25	35
DK/Refused	0	0	1	0	0	0
No Response	634	657	397	382	430	484

Table B.65: (Question 16) Were you working for pay 12 months ago, that is, last April (May)?

	2004	2005	2007	2008	2009	2010
Yes	61.7%	75.3%	63.6%	63.3%	71.7%	68.2%
No	38.3%	24.7%	36.4%	36.7%	28.3%	31.8%
N	665	682	418	403	446	507
DK/Refused	11	12	6	8	9	12
No Response	0	0	0	0	0	0

Table B.66: (Question 17) Do you earn more, less, or about the same as you did last April (May)?

	2004	2005	2007	2008	2009	2010
More	16.4%	14.1%	9.2%	19.8%	9.8%	10.0%
Less	24.2%	19.9%	21.5%	16.5%	16.4%	19.7%
The same	59.4%	66.0%	69.3%	63.7%	73.9%	70.3%
N	407	512	261	237	287	320
DK/Refused	3	1	5	3	3	1
No Response	266	181	158	171	165	198

Table B.67: (Question 18) *Is your hourly pay more, less, or about the same as it was last April (May)?*

	2004	2005	2007	2008	2009	2010
More	16.6%	12.7%	12.1%	19.9%	12.1%	12.5%
Less	19.0%	13.3%	13.3%	13.1%	7.9%	9.9%
The same	64.4%	74.0%	74.6%	66.9%	80.0%	77.6%
N	401	499	256	236	280	313
DK/Refused	9	14	10	4	10	8
No Response	266	181	158	171	165	198

Table B.68: (Question 19) *Is the number of hours per week that you work more, less, or about the same as it was last April (May)?*

	2004	2005	2007	2008	2009	2010
More	8.9%	10.5%	5.0%	6.3%	6.3%	7.0%
Less	29.2%	19.1%	21.2%	21.9%	18.6%	18.7%
The same	61.9%	70.3%	73.7%	71.7%	75.1%	74.4%
N	407	510	259	237	285	316
DK/Refused	3	5	7	3	5	5
No Response	266	181	158	171	165	198

Table B.69: (Question 20a) *Your education*

	2004	2005	2007	2008	2009	2010
Big problem	--	13.2%	15.8%	13.3%	17.1%	17.4%
Small problem	--	16.3%	13.3%	13.3%	11.2%	11.9%
Not a problem	--	54.1%	51.7%	56.3%	53.9%	53.9%
Helped when finding a job	--	16.3%	19.2%	17.0%	17.8%	16.8%
N	--	677	412	405	445	512
DK/Refused	--	17	12	6	10	7
No Response	--	0	0	0	0	0

Table B.70: (Question 20b) *Transportation to and from work*

	2004	2005	2007	2008	2009	2010
Big problem	--	18.2%	19.3%	20.0%	22.2%	20.6%
Small problem	--	13.6%	10.2%	10.2%	6.6%	10.8%
Not a problem	--	61.5%	64.8%	64.1%	64.3%	64.4%
Helped when finding a job	--	6.7%	5.7%	5.6%	6.8%	4.2%
N	--	694	420	410	454	519
DK/Refused	--	0	4	1	1	0
No Response	--	0	0	0	0	0

Table B.71: (Question 20c) Finding a job in your community

	2004	2005	2007	2008	2009	2010
Big problem	--	40.7%	44.2%	43.5%	47.1%	47.6%
Small problem	--	26.2%	17.5%	18.6%	15.1%	15.4%
Not a problem	--	30.4%	36.2%	35.9%	33.6%	35.0%
Helped when finding a job	--	2.7%	2.2%	2.0%	4.1%	2.0%
N	--	669	412	398	437	506
DK/Refused	--	25	12	13	18	13
No Response	--	0	0	0	0	0

Table B.72: (Question 20d) Discrimination by employers

	2004	2005	2007	2008	2009	2010
Big problem	--	17.8%	21.2%	18.9%	20.7%	16.5%
Small problem	--	16.2%	16.5%	13.3%	11.3%	15.5%
Not a problem	--	65.1%	62.0%	67.1%	67.8%	67.8%
Helped when finding a job	--	1.0%	0.2%	0.8%	0.2%	0.2%
N	--	685	411	392	444	503
DK/Refused	--	9	13	19	11	16
No Response	--	0	0	0	0	0

Table B.73: (Question 20e) Community attitudes towards disabilities

	2004	2005	2007	2008	2009	2010
Big problem	--	22.6%	24.4%	20.7%	19.7%	20.6%
Small problem	--	25.1%	18.9%	17.8%	19.2%	22.0%
Not a problem	--	50.8%	55.4%	60.5%	60.2%	57.2%
Helped when finding a job	--	1.6%	1.3%	1.1%	0.9%	0.2%
N	--	665	397	377	422	500
DK/Refused	--	29	27	34	33	19
No Response	--	0	0	0	0	0

Table B.74: (Question 20f) Finding childcare that doesn't cost too much.

	2004	2005	2007	2008	2009	2010
Big problem	--	6.6%	9.6%	17.3%	20.7%	18.6%
Small problem	--	5.2%	4.3%	4.0%	5.7%	6.0%
Not a problem	--	87.1%	85.7%	78.7%	73.6%	24.3%
Helped when finding a job	--	1.1%	0.3%	0.0%	0.0%	0.0%
N	--	643	322	150	140	167
DK/Refused/NA	--	51	102	261	315	352
No Response	--	0	0	0	0	0

Table B.75: (Question 20g) Need for personal assistance on the job

	2004	2005	2007	2008	2009	2010
Big problem	--	12.2%	10.3%	9.3%	16.1%	13.0%
Small problem	--	13.4%	14.1%	19.8%	17.0%	16.2%
Not a problem	--	71.9%	74.6%	70.1%	65.7%	69.3%
Helped when finding a job	--	2.5%	1.0%	0.9%	1.1%	1.5%
N	--	679	398	344	353	463
DK/Refused/NA	--	15	26	67	102	56
No Response	--	0	0	0	0	0

Table B.76: (Question 20h) Need for special equipment or assistive technology on the job

	2004	2005	2007	2008	2009	2010
Big problem	--	11.4%	11.2%	10.9%	19.9%	13.5%
Small problem	--	13.7%	12.9%	15.8%	15.3%	13.5%
Not a problem	--	74.2%	75.6%	73.0%	63.6%	72.5%
Helped when finding a job	--	0.8%	0.2%	0.3%	1.1%	0.4%
N	--	685	402	348	352	466
DK/Refused/NA	--	9	22	63	103	53
No Response	--	0	0	0	0	0

Table B.77: (Question 20i) Is there anything else that's a problem when finding or keeping a job?

	2004	2005	2007	2008	2009	2010
Yes	--	--	--	14.3%	13.9%	0.8%
No	--	--	--	85.7%	86.1%	99.2%
N	--	--	--	406	454	516
DK/Refused	--	--	--	5	1	3
No Response	--	--	--	0	0	0

Table B.78: (Question 21) Would you say that your health is...

	2004	2005	2007	2008	2009	2010
Excellent	3.7%	3.0%	3.3%	4.4%	3.1%	2.9%
Good	17.7%	16.8%	14.9%	18.3%	14.2%	18.3%
Fair	39.0%	35.4%	37.7%	30.6%	35.8%	31.7%
Poor	30.0%	32.2%	32.5%	32.5%	31.2%	32.8%
Very Poor	9.6%	12.6%	11.6%	14.2%	15.7%	14.4%
N	671	694	422	409	452	515
DK/Refused	5	0	2	2	3	4
No Response	0	0	0	0	0	0

Table B.79: (Question 22) Do you have a disability?

	2004	2005	2007	2008	2009	2010
Yes	99.3%	98.7%	99.5%	99.8%	99.1%	99.0%
No	0.7%	1.3%	0.5%	0.2%	0.9%	1.0%
N	675	693	422	410	455	517
DK/Refused	1	1	2	1	0	2
No Response	0	0	0	0	0	0

Table B.80: (Question 24) In addition to your disability, do you have any other medical problems, impairments or disabilities?

	2004	2005	2007	2008	2009	2010
Yes	75.9%	76.1%	74.3%	71.0%	77.0%	73.2%
No	24.1%	23.9%	25.7%	29.0%	23.0%	26.8%
N	667	678	420	407	448	512
DK/Refused	3	5	2	2	3	0
No Response	6	10	2	2	4	7

Table B.81: (Question 26) Do you currently ...

	2004	2005	2007	2008	2009	2010
Live at someone else's home or apartment	15.3%	9.3%	11.8%	12.7%	13.8%	11.6%
Live in an apartment that provides services	2.7%	--	2.1%	1.0%	2.6%	3.1%
Live in a group home	1.0%	1.1%	0.2%	0.2%	0.2%	1.2%
A health care facility, institution, hospital or nursing home	1.5%	0.9%	0.5%	1.2%	0.9%	1.2%
Rent a home or apartment	--	50.1%	47.6%	46.8%	45.8%	46.1%
Own a home or apartment	78.7%	36.5%	36.7%	37.6%	35.9%	35.9%
Don't have a permanent home	0.6%	0.0%	0.2%	0.5%	0.4%	1.0%
Other	0.1%	2.0%	0.7%	0.0%	0.2%	0.0%
N	676	694	422	410	454	516
DK/Refused	0	0	2	1	1	3
No Response	0	0	0	0	0	0

Table B.82: (Question 27) Are you currently married?

	2004	2005	2007	2008	2009	2010
Yes	26.1%	29.0%	29.1%	28.6%	23.8%	26.4%
No	73.9%	71.0%	70.9%	71.4%	76.2%	73.6%
N	676	694	423	409	454	519
DK/Refused	0	0	1	2	1	0
No Response	0	0	0	0	0	0

Table B.83: (Question 28) Does your spouse work in a job for pay?

	2004	2005	2007	2008	2009	2010
Yes	59.7%	61.2%	52.8%	64.3%	55.1%	49.6%
No	40.3%	38.8%	47.2%	35.7%	44.9%	50.4%
N	176	195	123	115	107	135
DK/Refused	0	6	0	2	1	1
No Response	500	493	301	294	347	382

Table B.84: (Question 29) Are you worried that your spouse's earnings may make you lose your Medicaid benefits?

	2004	2005	2007	2008	2009	2010
Yes	28.3%	28.3%	23.4%	26.4%	25.0%	26.2%
No	71.7%	71.7%	76.6%	73.6%	75.0%	73.8%
N	103	117	64	72	56	65
DK/Refused	2	2	1	1	3	2
No Response	571	575	359	338	396	452

Table B.85: (Question 30b) Do you work for yourself or an employer?

	2004	2005	2007	2008	2009	2010
Work for Self	--	--	--	38.0%	37.9%	38.5%
Work for Employer	--	--	--	57.9%	59.1%	58.9%
Both	--	--	--	4.1%	3.0%	2.6%
N	--	--	--	337	369	426
DK/Refused	--	--	--	6	11	8
No Response	--	--	--	68	75	85

Table B.86: (Question 30e) Would that be working for yourself, or an employer?

	2004	2005	2007	2008	2009	2010
Work for Self	--	--	--	18.6%	18.5%	24.3%
Work for Employer	--	--	--	60.5%	74.1%	64.3%
Both	--	--	--	20.9%	7.4%	11.4%
N	--	--	--	43	54	70
DK/Refused	--	--	--	25	21	15
No Response	--	--	--	343	380	434

Table B.87: (Question 31a) Do you have anything that you like about the MEPD program?

	2004	2005	2007	2008	2009	2010
Yes	55.8%	59.0%	57.3%	59.2%	39.1%	17.4
No	44.2%	41.0%	42.7%	40.8%	60.9%	82.6%
N	644	692	384	380	417	493
DK/Refused	32	2	40	31	38	26
No Response	0	0	0	0	0	0

Table B.88: (Question 31b) Do you have anything you dislike about the MEPD program?

	2004	2005	2007	2008	2009	2010
Yes	33.2%	32.9%	20.4%	22.8%	16.1%	15.8%
No	66.8%	67.1%	79.6%	77.2%	83.9%	84.2%
N	647	688	407	394	440	501
DK/Refused	29	6	17	17	15	18
No Response	0	0	0	0	0	0

Table B.89: (Question 32a) Would you like to get a copy of the report summary?

	2004	2005	2007	2008	2009	2010
Yes	86.5%	87.9%	88.9%	91.5%	89.0%	88.0%
No	13.5%	12.1%	11.1%	8.5%	11.0%	12.0%
N	675	694	423	410	454	518
DK/Refused	1	0	1	1	1	1
No Response	0	0	0	0	0	0

Appendix C

Pre-Notice Letter



STATE OF IOWA

CHESTER J. CULVER, GOVERNOR
PATTY JUDGE, LT. GOVERNOR

DEPARTMENT OF HUMAN SERVICES
CHARLES J. KROGMEIER, DIRECTOR

March 9, 2010

«FirstName» «LastName»
«Addr1»
«Addr2»
«City», «STATE» «ZIPCODE»

Dear «FirstName»:

We will be conducting a telephone survey to interview people who have the Medicaid for Employed Persons with Disabilities (MEPD) program. This survey is sponsored by the MEPD Advisory Committee, who represents people with disabilities, their family members, the Department of Human Services (DHS) and the University of Iowa's Center for Disabilities and Development. This committee is responsible for making suggestions to improve the MEPD program. The purpose of the phone survey is to learn about MEPD members' thoughts about working and the MEPD program. You have been randomly selected to get this letter. Some people who get this letter will be called for this confidential telephone survey. Other people will not be called.

We want to be sure we have your correct phone number. We have it as:

«phonepp».

- *If this is correct, please do not call.*
- If this is **not** your correct phone number, please make a free call to Member Services at 1-800-338-8366 to give your correct phone number before **March 18, 2010**. In the Des Moines area, please call 256-4606. **Please let them know you received this letter when you call.**

Your Medicaid benefits **will not** be changed if you are called and:

- you decide to not answer questions or
- you decide to answer questions.

We will make telephone calls to ask questions for this survey to MEPD members. You may receive a call within the next few weeks from a person who works for the University of Northern Iowa's Center for Social and Behavioral Research. If they call you, they will ask some questions that should take only 15 minutes of your time. You do not have to take the survey if you do not want to.

We want to thank you in advance for your help. Your help is very important to us. If you have any questions about this telephone survey please call Medicaid Member Services at 1-800-338-8366 (free phone call).

Sincerely,

Matthew S. Haubrich, Chief
Bureau of Planning and Research
Iowa Department of Human Services

«SurveyID»-10

Appendix D

Responses to Open-Ended Questions

Available in Master Copy

